

 **clarion**<sup>®</sup>  
sound profound



[www.clarionaudio.com](http://www.clarionaudio.com)

**PRO PORTFOLIO 2024**

---

**designed by sound professionals,  
for sound professionals**



# **SOUND PROFOUND BRAND**

**Trusted Quality | Largest Single Brand Portfolio**

**43 Plus Years | 5000 Plus Nationwide Dealer Network | 220 Plus Service Points**

## Our Portfolio:

---

<a href="#">Line Array System</a>	04
<a href="#">Full Range Speakers</a>	10
<a href="#">Active Speakers</a>	20
<a href="#">Amplifiers</a>	24
<a href="#">PA Series</a>	30
<a href="#">Portable Amplifiers</a>	31
<a href="#">Transducers</a>	32
<a href="#">Compression Drivers</a>	38
<a href="#">Mixers</a>	43
<a href="#">Microphones</a>	56
<a href="#">Microphone Holders &amp; Stands</a>	72
<a href="#">Drum Kit Sets</a>	73
<a href="#">Karaoke Series</a>	75
<a href="#">Wall Speakers</a>	78
<a href="#">Ceiling Speakers</a>	83
<a href="#">Cables &amp; Connectors</a>	85









## JM K-ARRAY 212

### DUAL 12" LINE ARRAY SYSTEM

<b>Frequency response:</b>	50Hz—18KHz
<b>Components:</b>	MF 2×12" (75 Voice coil neodymium unit), HF 1×3" (75 Voice coil neodymium unit)
<b>Power:</b>	1200W(RMS), 2400W(Program)
<b>(1W/1m) Sensitivity:</b>	98dB
<b>(SPL) Maximun SPL:</b>	132dB
<b>Nominal impedance:</b>	8Ω
<b>Dispersion:</b>	110/90°H × 7°V
<b>Connection:</b>	2xNL4
<b>Suspension Hardware:</b>	K-ARRAY212 Hardware
<b>Enclosure Material:</b>	15mm Plywood, Environmental Protection Wear Resistant Coffee/Black colored water-based Paint
<b>Dimension (W×H×D):</b>	930×356×535

## JM LA-SUB18(8000)

### DUAL 18" SUBWOOFER SYSTEM

<b>Frequency response:</b>	30Hz-200Hz(±5dB)
<b>Components:</b>	2×18" (125mm Voice coil)
<b>Power:</b>	2000W(RMS), 4000W(Program), 8000W(Max)
<b>(1W/1m) Sensitivity:</b>	108dB
<b>(SPL) Maximun SPL:</b>	135dB
<b>Nominal impedance:</b>	4Ω
<b>Connection:</b>	2xNL4 Speakon
<b>Enclosure Material:</b>	18mm Plywood, Environmental Protection Wear Resistant Coffee/Black colored water-based Paint
<b>Dimension (W×H×D):</b>	1163×580×680mm



[Back to Contents](#)





# JM LA-SUB18182(3200)

## DUAL 18" SUBWOOFER SYSTEM

Type:	Labyrinth Subwoofer
Drivers LF:	2×18" 100mm
Frequency Response:	25Hz-800Hz
Rated Power:	1600W
Program Power:	3200W
Nominal Impedance:	4Ω
Sensitivity	106dB
Input Connectors:	2×Speakon NL4
Maximum SPL:	138dB
Net Weight:	87KG
Dimensions(W×H×D):	1065×560×780mm
Enclosure Material:	Birch Plywood

This labyrinth-type super subwoofer is designed with two subwoofers facing each other, which delivers better Instant Bass Effect and transparency. Exclusive Birch Plywood outer box, for exceptional clarity & power impact.

# JM LA-1205

## 12" NEODYMIUM LINE ARRAY SYSTEM

Type:	Full Range Line array
Drivers :	
LF:	1 x 12"
HF:	1 x 3" Both Neodymium
Frequency Response:	65Hz - 18kHz(±3dB)
Rated Power:	400W
Program Power:	800W
Nominal Impedance:	8Ω
Sensitivity:	98dB
Input Connectors:	2xNL4 Speakon
Maximum SPL:	127dB
Dispersion(-6dB):	90°H x12°V
Crossover:	1.3 kHz
Hanging Hardware:	Standard Hangers
Dimensions(W×H×D):	635x315x445mm
Enclosure Material:	Birch Plywood



[Back to Contents](#)





## JM LA-SUB1802(800)

### 18" PASSIVE SUBWOOFER

<b>Type:</b>	Direct Subwoofer for single Line Array Systems
<b>Drivers:</b>	
<b>LF:</b>	1 x 18" Neodymium
<b>Frequency Response:</b>	35Hz - 150Hz(±3dB)
<b>Rated Power:</b>	800W
<b>Program Power:</b>	1600W
<b>Nominal Impedance:</b>	8Ω
<b>Sensitivity:</b>	103dB
<b>Input Connectors:</b>	2xNL4 Speakon
<b>Maximum SPL:</b>	135dB
<b>Dispersion(-6dB):</b>	90°H x12°V
<b>Crossover:</b>	50Hz-120Hz
<b>Hanging Hardware:</b>	Standard Hangers
<b>Dimensions(W×H×D):</b>	635x500x665mm

## JM LA-8804

### DUAL 8" LINE ARRAY SYSTEM

<b>Type:</b>	Full Range Line array
<b>Drivers:</b>	
<b>LF:</b>	2 x 8"
<b>HF:</b>	1 x 3"
<b>Frequency Response:</b>	35Hz - 18kHz(±3dB)
<b>Rated Power:</b>	400W
<b>Program Power:</b>	800W
<b>Nominal Impedance:</b>	8Ω
<b>Sensitivity:</b>	103dB
<b>Input Connectors :</b>	2xNL4 Speakon
<b>Maximum SPL:</b>	124dB
<b>Dispersion(-6dB):</b>	90°H x10°V
<b>Crossover:</b>	1.3 kHz
<b>Hanging Hardware:</b>	Standard Hangers
<b>Dimensions(W×H×D):</b>	570x235x397mm



Due to compact size and versatile frequency coverage, dual 8-inch full-range line array speakers are suitable for smaller to medium-sized venues.

[Back to Contents](#)





## JM LA-SUB1802(600)

SINGLE 18" SUBWOOFER

Type:	Direct Subwoofer
Drivers:	
LF:	1 x 18"/4inches Voice Coil
Frequency Response:	35Hz - 150Hz(±3dB)
Rated Power:	600W
Program Power:	1200W
Nominal Impedance:	8Ω
Sensitivity:	101dB
Input Connectors:	2xNL4 Speakon
Maximum SPL:	132dB
Dispersion(-6dB):	90°H x10°V
Crossover:	50Hz-150Hz
Hanging Hardware:	Standard Hangers
Dimensions(W×H×D):	570x500x670

## JM LA-5501

DUAL 5.5" LINE ARRAY SYSTEM

Type:	Full Range Line array
Drivers:	
LF:	2 x 5.5"
HF:	1 x 1.5"
Frequency Response:	75Hz - 18kHz(±3dB)
Rated Power:	200W
Program Power:	400W
Nominal Impedance:	8Ω
Sensitivity:	96dB
Input Connectors:	2xNL Speakon
Maximum SPL:	120dB
Dispersion(-6dB):	90°H x14°V
Crossover:	1.8 kHz
Hanging Hardware:	Standard
Dimensions(W×H×D):	420x159x229mm



Direct the sound efficiently over a wide area, ensuring good coverage and audio clarity.

[Back to Contents](#)





## JM LA-SUB1208(1000)

### SINGLE 12" SUBWOOFER

Type:	Line Array Subwoofer
Drivers:	
LF:	1 x 12"
Frequency Response:	40Hz - 200Hz(±3dB)
Rated Power:	500W
Program Power:	1000W
Nominal Impedance:	8Ω
Sensitivity:	99dB
Input Connectors:	2xNL4 Speakon
Maximum SPL:	126dB
Dispersion(-6dB):	90°H x14°V
Crossover:	60Hz-180Hz
Hanging Hardware:	Standard
Dimensions(W×H×D):	420x352x430mm

Deliver punchy and well-rounded low-end frequencies with vertical dispersion and compact design, especially in enclosed spaces or peculiar acoustic environments.

[Back to Contents](#)

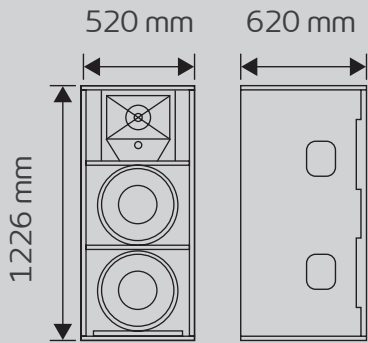






JM 1515N  
DUAL 15" FULL RANGE SPEAKER  
SYSTEM

Cabinet Size:



Feature:

Three-way speaker, the low frequency adopts advanced anti-compression audio technology.  
Flexible installation to meet your different on-site needs.  
High frequency clear and bright, mid frequency penetrating power.  
P325 is made of 18mm birch plywood cabinet, painted by water-proof paint.  
P325's unique phase structure is labyrinth, and the anti-mounted speaker forms a push-pull with the low-frequency unit below, which increases damping and improves dynamic range, and makes the bass more powerfull and flexible.

Application:

Mobile performances, stage performances, celebrations, band's live show.  
Outdoor small and medium-sized performances.  
Multi-functional hall, banquet hall, lecture hall.

System Type:	Double 15 inch 3 way Professional Speaker
Frequency Range:	38Hz-20kHz
Frequency Response:	55Hz-18kHz(±3dB)
Sensitivity:	105db half space
Nominal Impedance:	4Ω
Power Rating/ Program Power:	1200W/2400W
Driver Configuration:	
HF:	44mm voice coil
MF:	120mm magnet/49.5mm voice coil
LF:	2x190mm magnet/75mm voice coil
Maximum Spl@1M:	136 db SPL
Coverage Pattern:	110°x70°
Input Connectors:	2xNeutrik® NL4MP
Dimensions (HxWxD):	1226mm x 520mm x 620mm
Net Weihgt (each):	67kg

[Back to Contents](#)





## JM K-FIGHTER 15

### 15" MULTIFUNCTION SPEAKER

Power:	450W
Max Power:	900W
Sensitivity:	95dB
Maximun SPL:	128dB
Impedence:	8Ω
Frequency :	45Hz - 18KHz
Tweeter Drive Spec:	51 mm
LF:	1 x 15"
Coverage:	90°HX60°V
Input Connectors:	45Hz-18KHz 2XNL4 Speakon

Uniquely designed to play multiple roles - Stage Monitor, Hanging Karaoke Speaker or even a Vertical Standing Speaker.

## JM K-FIGHTER 12

### 12" MULTIFUNCTION SPEAKER

Power:	350W
Max Power:	700W
Sensitivity:	96dB
Maximum SPL:	125dB
Frequency:	50Hz - 18KHz
Tweeter Drive Spec:	44 mm
LF:	1 x 12"
Coverage:	90°Hx60°V
Voice Coil:	1.75"
Input Connectors:	55Hz-18KHz 2xnl4 Speakon



[Back to Contents](#)







# JM KW8

(SINGLE 8)



Frequency Response:	58HZ-20KHZ(-3DB)
Sensitivity:	94dB
Nominal Impedance:	8Ω
Power Rating :	150W
Max Power:	600W
Driver Configuration:	
HF:	1 x 1.35" tweeter with 34.0mm V.C. Titanium Diaphragm 90mm OZ magnet
LF:	1x 8 inch, 38.0mmVC. 120mm OZ magnet
Input Connectors:	2XNL4 Speakon
Cabinet:	15mm Plywood, sand painted
Dimensions:	260*320*410mm

# JM KW10

(SINGLE 10)

Frequency Response:	52HZ-20KHZ(-3DB)
Sensitivity:	95dB
Nominal Impedance:	8Ω
Power Rating:	250W
Max Power:	1000W
Driver Configuration:	
HF:	1x 1.35" tweeter with 34.0mm V.C. Titanium Diaphragm 90mm OZ magnet
LF:	1x 10 inch, 38.0mmVC. 120mm OZ magnet
Input Connectors:	2XNL4 Speakon
Cabinet:	15mm Plywood, sand painted
Dimensions:	257*290*410mm



[Back to Contents](#)

## JM KW12

(SINGLE 12)



<b>Frequency Response:</b>	50HZ-20KHZ(-3DB)
<b>Sensitivity:</b>	97dB
<b>Nominal Impedance:</b>	8Ω
<b>Power Rating:</b>	400W
<b>Max Power:</b>	1600W
<b>Driver Configuration:</b>	
<b>HF:</b>	1 x 1.5" tweeter with 44.0mm V.C. Titanium Diaphragm 115mm OZ magnet
<b>LF:</b>	1x 12inch, 75.0mmV.C. 180mm OZ magnet
<b>Input Connectors:</b>	2XNL4 Speakon
<b>Cabinet:</b>	15mm Plywood, sand painted
<b>Dimensions:</b>	360*380*595 mm

## JM KW15

(SINGLE 15)

<b>Frequency Response:</b>	45HZ-20KHZ(-3DB)
<b>Sensitivity:</b>	98dB
<b>Nominal Impedance:</b>	8Ω
<b>Power Rating:</b>	450W
<b>Max Power:</b>	1800W
<b>Driver Configuration:</b>	
<b>HF:</b>	1 x 1.5" tweeter with 44.0mm V.C. Titanium Diaphragm 115mm OZ magnet
<b>LF:</b>	1x 15inch, 75.0mmV.C. 190mm OZ magnet
<b>Input Connectors:</b>	2XNL4 Speakon
<b>Cabinet:</b>	15mm Plywood, sand painted
<b>Dimensions:</b>	425*430*705 mm



[Back to Contents](#)





JM KW215  
(DOUBLE 15)

Frequency Response:	40HZ-20KHZ(-3DB)
Sensitivity:	101dB
Nominal Impedance:	4Ω
Power Rating:	800W
Max Power:	3200W
Driver Configuration:	
HF:	2 x 1.75" tweeter with 75.0mm V.C. Titanium Diaphragm 170mm OZ magnet
LF:	2x 15inch, 75.0mmV.C. 190mm OZ magnet
Input Connectors:	2XNL4 Speakon
Cabinet:	15mm Plywood, sand painted
Dimensions:	475*420*1100 mm

JM KS12  
12" FULL RANGE PASSIVE SPEAKERS

Type :	Passive Two-way
Drivers:	LF:1×12" 75,HF:1×1.7"
Frequency Response:	53Hz-20KHz
Rated Power:	500W
Program Power:	1000W
Nominal Impedance:	8Ω
Sensitivity:	103dB
Input Connectors:	2×Speakon NL4MP
Dimensions(W×H×D):	360×600×400mm
Net Weight:	25KG
Recommended AMP:	D-800
Box material:	15mm imported birch plywood
Horn angle:	W100°H90 degrees
Sockets:	2 x Neutrik NL4
Accessories:	15 M8 lifting screws. 1 stand bas



[Back to Contents](#)

## JM KS15

### 15" FULL RANGE PASSIVE SPEAKERS



<b>Type:</b>	Passive Two-way
<b>Drivers:</b>	
<b>LF:</b>	1×15" 75
<b>HF:</b>	1×3"
<b>Frequency Response:</b>	50Hz-20KHz
<b>Rated Power:</b>	700W
<b>Program Power:</b>	1400W
<b>Nominal Impedance:</b>	8Ω
<b>Sensitivity:</b>	106dB
<b>Input Connectors:</b>	2×Speakon NL4MP
<b>Dimensions(W×H×D):</b>	430×690×450mm
<b>Net Weight:</b>	34KG
<b>Recommended AMP:</b>	D-1000
<b>Box material:</b>	15mm imported birch plywood
<b>Horn angle:</b>	H80°V50 degrees
<b>Sockets:</b>	2 x Neutrik NL4
<b>Accessories:</b>	13 M8 lifting screws. 1 stand base

## JM KTV12

### 12" FULL RANGE KTV SPEAKERS

<b>Type:</b>	Passive Two-way
<b>Drivers:</b>	
<b>LF:</b>	12-inch 75-core long-stroke high-power mid-low unit
<b>HF:</b>	1.7-inch high-efficiency neodymium magnetic tweeter driver
<b>Frequency Response:</b>	53Hz-20KHz
<b>Rated Power:</b>	650W
<b>Program Power:</b>	1300W
<b>Nominal Impedance:</b>	8Ω
<b>Sensitivity:</b>	102dB
<b>Input Connectors:</b>	2×Speakon NL4MP
<b>Dimensions(W×H×D):</b>	360×590×420mm
<b>Net Weight:</b>	25KG
<b>Recommended AMP:</b>	D-1000
<b>Box material:</b>	15mm imported birch plywood
<b>Maximum SPL:</b>	130 dB



[Back to Contents](#)



# JM KTV15

## 15" FULL RANGE KTV SPEAKERS



Type:	Passive Two-way
Drivers:	
LF:	15-inch 75-core long-stroke high-power mid-low unit
HF:	3-inch high-efficiency treble driver, Both NEODYMIUM
Frequency Response:	50Hz-20KHz
Rated Power:	850W
Program Power:1	1700W
Nominal Impedance:	8Ω
Sensitivity:	103dB
Input Connectors:	2×Speakon NL4MP
Dimensions(W×H×D):	430×690×465mm
Net Weight:	27KG
Recommended AMP:	D-1000
Box material:	15mm imported birch plywood
Maximum SPL:	131 dB

# JM K15PS

## 15" FULL RANGE PASSIVE SPEAKERS

350W Treble: 34-core bass: 15-inch 170-core magnetic 75-core

Ergonomically Designed for applications in combination with K15AS Active Mixer Speaker.

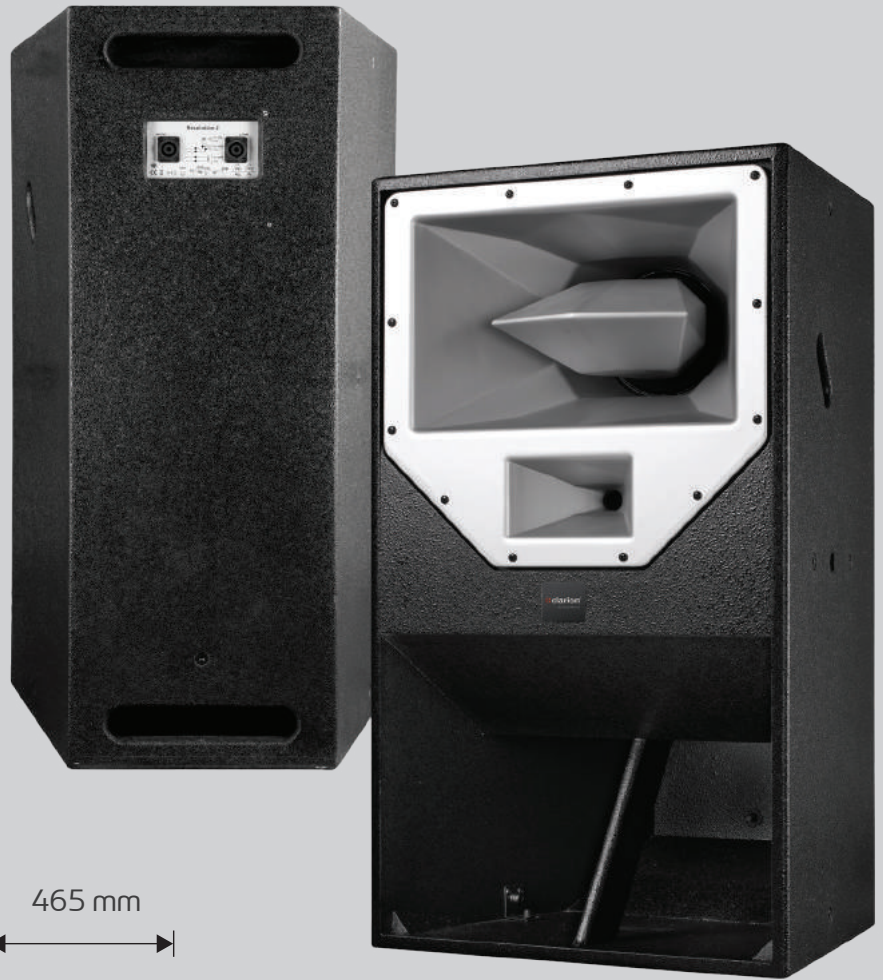
This is quite easy to set-up and could be used a stand alone speaker with Hi power Amplifiers. Sturdy ABS Case for rugged use and easy mobility.



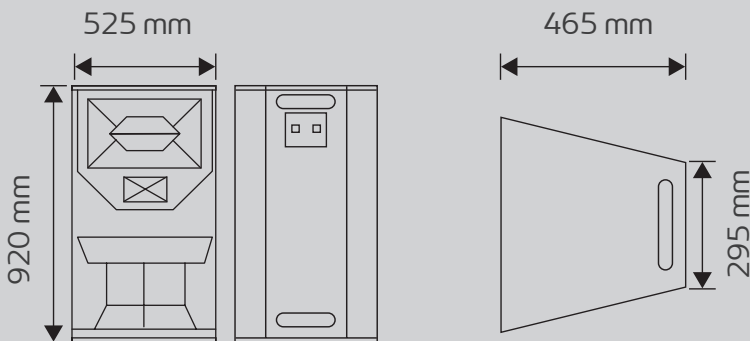
[Back to Contents](#)

## JM K2

15" HI PERFORMANCE  
3 WAY SPEAKER



### Cabinet Size:



### Feature:

Outdoor mode, high and middle sound clear, voice is full, suitable for sound reinforcement in outdoor venues, stadiums, etc.

Built-in three-way design, bass labyrinth cabinet, mid driver adopts duckbill horn, which makes the sound range longer, the human voice is clearer and fuller, the curve is gentle, and the scope of application is wider.

### Application:

Small and medium-sized theaters  
Small and medium-sized outdoor performances  
Multi-purpose hall  
Outdoor venues, stadiums

<b>System Type:</b>	Single 15 inch 3 way Professional Speaker
<b>Frequency Range:</b>	(15" 8" 1.75")28Hz-250Hz, 250Hz-1.5KHz, 1.5KHz-20KHz
<b>Frequency Response:</b>	50Hz-16kHz(+/-3dB)
<b>Sensitivity 1w/lm:</b>	(15" 8" 1.75")102db, 105dB, 107dB
<b>Nominal Impedance:</b>	8Ω
<b>Power Rating:</b>	800W
<b>Driver Configuration:</b>	
HF:	44mm/120mm magnet
MF:	8 inch 140 magnet/51mm voice coil
LF:	220mm magnet/100mm voice coil
<b>Coverage Pattern:</b>	70°x70°
<b>Input Connectors:</b>	Double Neutrik®NL4MP
<b>Dimensions (HxWxD):</b>	920mm x 525mm x 465mm
<b>Net Weight (each):</b>	48kg

[Back to Contents](#)



**clarion®** | ACTIVE  
SPEAKERS  
sound profound



## K15PA

### 15" FULL RANGE ACTIVE SPEAKER



<b>Tech Specs:</b>	2 way, 15 inch full range active system
<b>Compression Driver (HF):</b>	Neodymium 1 x 2" V.C. Titanium diaphragm
<b>Woofer (LF):</b>	15 inch, 3" V.C. 70 OZ magnet
<b>Sensitivity:</b>	127 DB
<b>Frequency Response:</b>	45 - 20000 Hz
<b>RMS Power:</b>	500+200 watts
<b>Max Power:</b>	1400 watts
<b>Voltage:</b>	220 v $\pm$ 20%
<b>Casing:</b>	plastic cabinet, rain paint
<b>Rear Panel</b>	2 x XLR/JACK Combo, 1 x Aux,
<b>metal panel</b>	
<b>Inputs:</b>	1 x RCA
<b>Outputs:</b>	1 x mix out
<b>Amplifier Functions:</b>	DSP/LCD/BT/TWS/US

Built-in Class D Amplifier with DSP which reduces the operation cost of setting up external amplifiers, receivers and long array of cables.

## K18PA(SUB 2000)

### 18" ACTIVE SUBWOOFER

<b>Tech Specs:</b>	
<b>Woofer(LF):</b>	18 inch, 4" V.C. 125 OZ magnet
<b>Sensitivity:</b>	98 DB
<b>Frequency Response:</b>	30 Hz-180 Hz
<b>RMS Power:</b>	800 watts
<b>Max Power:</b>	2000 watts
<b>Voltage:</b>	220 v $\pm$ 20%
<b>Cabinet:</b>	18mm Plywood, Sand Painted
<b>Inputs:</b>	2 x XLR/JACK Combo, 2 x XLR link
<b>Outputs:</b>	2 x link out, 2 x mix out
<b>Amplifier Function:</b>	DSP/BT/TWS
<b>Maximun SPL:</b>	131dB
<b>Nominal impedance:</b>	8 $\Omega$
<b>Connection:</b>	230V/50hz AC
<b>Dimension (W×H×D):</b>	510x690x660mm

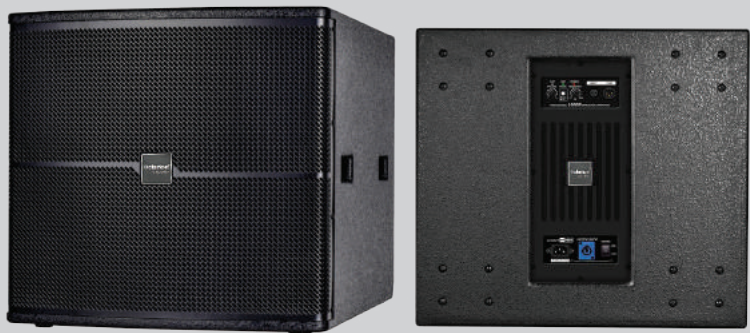


Built-in Class D Amplifier with DSP which reduces the operation cost of setting up external amplifiers, receivers and long array of cables.

[Back to Contents](#)



## JM-K-18S-PA(SUB1800) 18" ACTIVE SUBWOOFER SYSTEM



Frequency response:	35Hz-200Hz
Components:	
LF:	1×18"(100mmVoicecoil)
Power:	800W(RMS)
Built in amplifier power:	1000W
Sensitivity:	95dB
Maximum SPL:	128dB
Nominal impedance:	8Ω
Connection:	120V-220V DC
Suspension Hardware:	Base×1pc
Enclosure Material:	18mm
Dimension (W×H×D):	575.3×548×721mm

## K12LA 12" ACTIVE COLUMN SPEAKER

12" Subwoofer  
600w  
Built in dsp  
Multi speaker  
connectivity

Woofer:	30.48cm
Mid-range:	10.2 cm
Tweeter:	7.62cm

With Vertical Pattern Control - a tall line array speaker which can achieve narrow vertical coverage down to a substantially low frequency. This sends less sound to the ceiling, reducing bothersome reflections back into the listening space and increases the direct-to-reverberation ratio towards listeners.



[Back to Contents](#)

## JM K15AS

### 15" ACTIVE MIXER AMPLIFIER SPEAKER

Mixer-level 8-channel input

Built-in High Efficiency Class D power amplifier (rated output power: 400W \* 2/8Ω)

Incredibly Flat Frequency Response

Digital Display

USB player with recording

Built-in 16 microphone digital effects

+ 48V Phantom Power

Connect iPod via Bluetooth, iPhone, iPad or any other MP3 player

With built-in USB Wireless microphone input port

XLR parallel output port for extended audio systems

Host can extend three passive speaker outputs



[Back to Contents](#)







## JM K-AMP-1502(7100)

### 2CH CLASS D AMPLIFIER

<b>8Ω/Stereo:</b>	2X1500W
<b>4Ω/Stereo:</b>	2X2550W
<b>2Ω/Stereo*:</b>	2X3570W
<b>16Ω/Bridge:</b>	1X3000W
<b>8Ω/Bridge:</b>	1X5100W
<b>4Ω/Bridge*:</b>	1X7140W
<b>Output RMS voltage:</b>	109.5V
<b>Slew rate:</b>	50V/us
<b>Sensitivity:</b>	41dB,38dB,35dB,32dB
<b>THD+N:</b>	0.01%
<b>IMD-SMPTE:</b>	0.01%
<b>DIME30:</b>	0.01%
<b>Cross -talk:</b>	>=90dB
<b>Frequency response:</b>	+/-0.2dB
<b>Input Impedance:</b>	20KΩ(Balance),10KΩ(Unbalance)
<b>Damp factor:</b>	>=5000
<b>SNR:</b>	>=110dB
<b>Main power:</b>	90-260VAC,50-60Hz
<b>Protection:</b>	Under voltage /DC/temperature/over load limit/Short protection
<b>Size (WxHxD):</b>	483x44x370mm
<b>Net Weight:</b>	9 Kg

## JM K-AMP-1001(5750)

### 2CH CLASS D AMPLIFIER

<b>8Ω/Stereo:</b>	2X1000W
<b>4Ω/Stereo:</b>	2X1700W
<b>2Ω/Stereo*:</b>	2X2890W
<b>16Ω/Bridge:</b>	1X2000W
<b>8Ω/Bridge:</b>	1X3400W
<b>4Ω/Bridge*:</b>	1X5780W
<b>Output RMS voltage:</b>	89.4V
<b>Slew rate:</b>	50V/us
<b>Sensitivity:</b>	38dB, 35dB, 32dB, 29dB
<b>THD+N:</b>	0.01%
<b>IMD-SMPTE:</b>	0.01%
<b>DIME30:</b>	0.01%
<b>Cross -talk:</b>	>=90dB
<b>Frequency response:</b>	+/-0.2dB
<b>Input Impedance:</b>	20KΩ(Balance), 10KΩ(Unbalance)
<b>Damp factor:</b>	>=5000
<b>SNR:</b>	>=110dB
<b>Main power:</b>	90-260VAC, 50-60Hz
<b>Protection:</b>	Under voltage /DC/temperature/over load limit/Short protection
<b>Size (WxHxD):</b>	483x44x370mm
<b>Net Weight:</b>	9 Kg



[Back to Contents](#)



# JM K-AMP-800(4600)

## 2CH CLASS D AMPLIFIER



8Ω/Stereo:	2X800W
4Ω/Stereo:	2X1360W
2Ω/Stereo*:	2X2310W
16Ω/Bridge:	1X1600W
8Ω/Bridge:	1X2720W
4Ω/Bridge*:	1X4620W
Output RMS voltage:	80.0V
Slew rate:	50V/us
Sensitivity:	38dB, 35dB, 32dB, 29dB
THD+N:	0.01%
IMD-SMPTE:	0.01%
DIME30:	0.01%
Cross -talk:	>=90dB
Frequency response:	+/-0.2dB
Input Impedance:	20KΩ(Balance),10KΩ(Unbalance)
Damp factor:	>=5000
SNR:	>=110dB
Main power:	90-260VAC,50-60Hz
Protection:	Under voltage /DC/temperature/ over load limit/Short protection
Size (WxHxD):	483x44x370mm
Net Weight:	9 Kg

# JM K-AMP 11000

## 2CH CLASS H AMPLIFIER

Transistors:	34PAIRS-21193.21194.
The capacitor:	24 pcs15000U/100V
Outputpower 8Ω*2:	2X2550W
Out put power 4Ω*2:	2X3750W
Out put power 2Ω*2:	2X5500W
Out put power 8Ω bridged:	7500W
Out put power 4Ω bridged:	11000W
Net weight:	40.81 KG
Gross weight:	45.96KG

75.5 X 56 X 20.5 CM  
Transformer  
135v-90v-45v-ov-45v-90v-135v  
Class h  
17 Pairs mjl transistor  
Per side  
100% Pure copper



[Back to Contents](#)

## JM K-AMP 4.7500

### 4CH CLASS H AMPLIFIER

Transistors:	32PAIRS- 21193.21194.
The capacitor:	16PCS-15000U/100V
Output power 8Ω*2:	4x1000W
Output power 4Ω*2:	4x1500W
Output power 8Ω bridged:	2X3000W
Output power 4Ω bridged:	2X3800W

Transformer 135V-90V-45V-OV-45V-90V-135V  
 CLASS H; 17 PAIRS MJL TRANSISTOR PER SIDE;  
 100% PURE COPPER  
 Net Weight. 40.81 KG  
 GROSS WEIGHT: 45.96KG  
 Dimensions 75.5 X 56 X 20.5 CM

HIGH WATTAGE CLASS H AMPLIFIER which comes with state of art technology. Powered by a Genuine Copper Transformer for more effective performance, quality approved Transistors and a high Damping factor of >00, powered by 64 pcs NJW Transistors.



## JM K-AMP 7000

### 2CH CLASS H AMPLIFIER

<b>Stereo 2( Channels):</b>	
8 Ω /FTC20HZ-20KHZ@0.5%THD:	2x1350W
4 Ω /FTC20HZ-20KHZ@0.5%THD:	2x2400W
2 Ω /FTC20HZ-20KHZ@05.%THD:	2x3500W

<b>Bridged (Singal Channel):</b>	
8 Ω /FTC20HZ-20KHZ@0.1%THD:	2700W
4 Ω /FTC20HZ-20KHZ@0.1%THD:	4800W
SN/ (20HZ-20KHZ) 8 Ω:	99DB
THD (@8 Ω 1KHZ):	<0.5%
Input Impedance:	20K Ω
Frequency Response:	20HZ-20KHZ@1W
Circuit Type:	H3 CLASS
Damping Factor:	>900@8 Ω
Cooling System:	2Fans



<b>In/Output Connection:</b>	Input: Balance Female XLR, Link out:XLR male
<b>Control:</b>	Volume Control for each channel. Setero/Parallel/ Bridge, Bridge Denote, Low cut
<b>Indicator light:</b>	ON:ACTIVE SIG:SIGNAL PRO:PROTECT CLIP
<b>Protection:</b>	Short, Auto Limited, Over load ACD/ C protection
<b>Power Supply:</b>	220V (Default) ,110V (Could be customized)

[Back to Contents](#)



JM K-AMP 5500  
2CH CLASS H AMPLIFIER

Stereo 2( Channels)	
8 Ω /FTC20HZ-20KHZ@0.5%THD:	2x1200W
4 Ω /FTC20HZ-20KHZ@0.5%THD:	2x2000W
2 Ω /FTC20HZ-20KHZ@05.%THD:	2x2650W
Bridged (Singal Channel):	
8 Ω /FTC20HZ-20KHZ@0.1%THD:	2400W
4 Ω /FTC20HZ-20KHZ@0.1%THD:	4000W
SN/ (20HZ-20KHZ) 8 Ω:	99DB
THD (@8 Ω 1KHZ):	<0.5%
Input Impendance:	20K Ω
Frequency Response:	20HZ-20KHZ@1W
Circuit Type:	H3 CLASS
Damping Factor:	>900@8 Ω
Cooling System:	2Fans



In/Output Connection:	Input: Balance Female XLR, Link out:XLR male
Control:	Volume Control for each channel. Setero/Parallel/ Bridge, Bridge Denote, Low cut
Indicator light:	ON:ACTIVE SIG:SIGNAL PRO:PROTECT CLIP
Protection:	Short, Auto Limited, Over load ACD/ C protection
Power Supply:	220V (Default) ,110V (Could be customized)

JM K-AMP 4000  
2CH CLASS H AMPLIFIER

Stereo 2( Channels)	
8 Ω /FTC20HZ-20KHZ@0.5%THD:	2x1150W
4 Ω /FTC20HZ-20KHZ@0.5%THD:	2x1800W
2 Ω /FTC20HZ-20KHZ@05.%THD:	2x2000W
Bridged (Singal Channel):	
8 Ω /FTC20HZ-20KHZ@0.1%THD:	2300W
4 Ω /FTC20HZ-20KHZ@0.1%THD:	3600W
SN/ (20HZ-20KHZ) 8 Ω:	99DB
THD (@8 Ω 1KHZ):	<0.5%
Input Impendance:	20K Ω
Frequency Response:	20HZ-20KHZ@1W
Circuit Type:	H3 CLASS
Damping Factor:	>900@8 Ω
Cooling System:	2Fans



In/Output Connection:	Input: Balance Female XLR, Link out:XLR male
Control:	Volume Control for each channel. Setero/Parallel/ Bridge, Bridge Denote, Low cut
Indicator light:	ION:ACTIVE SIG:SIGNAL PRO:PROTECT CLIP
Protection:	Short, Auto Limited, Over load ACD/ C protection
Power Supply:	220V (Default) ,110V (Could be customized)

[Back to Contents](#)

# JM K-AMP 3000

## 2CH CLASS H AMPLIFIER

### Stereo 2( Channels)

8 $\Omega$ /FTC20HZ-20KHZ@0.5%THD:	2x800W
4 $\Omega$ /FTC20HZ-20KHZ@0.5%THD:	2x1200W
2 $\Omega$ /FTC20HZ-20KHZ@0.5%THD:	2x1400W

### Bridged (Singal Channel):

8 $\Omega$ /FTC20HZ-20KHZ@0.1%THD:	1600W
4 $\Omega$ /FTC20HZ-20KHZ@0.1%THD:	2400W
SN/ (20HZ-20KHZ) 8 $\Omega$ :	99DB
THD (@8 $\Omega$ 1KHZ):	<0.5%
Input Impendence:	20K $\Omega$
Frequency Response:	20HZ-20KHZ@1W
Circuit Type:	H3 CLASS
Damping Factor:	>900@8 $\Omega$
Cooling System:	2Fans



In/Output Connection:	Input: Balance Female XLR, Link out:XLR male
Control:	Volume Control for each channel. Setero/Parallel/ Bridge, Bridge Denote,Low cut
Indicator light:	ON:ACTIVE SIG:SIGNAL PRO:PROTECT CLIP
Protection:	Short,Auto Limited, Over load ACD/ C protection
Power Supply:	220V (Default) ,110V (Could be customized)

Entry level POWER PERFORMANCE, 2 CHANNEL AMPLIFIER with high damping factor for better BASS RESONANCE. Genuine Taiwanese transistors and 100% PURE COPPER Trans-former for continuous long duration play.

[Back to Contents](#)



## JM PA-AMP-251

### 6 ZONE PAGING AMPLIFIER

250 WATT

4Ω-16Ω BALANCED OUTPUT

70/100 V CONSTANT VOLTAGE OUTPUT

DIRECT SOS BUTTON FOR FIRE/EMERGENCY PAGING

3X MIC INPUT

6 ZONE OUTPUT

USB/SD/MP3/BT/AUX INPUT

2X MONITOR OUT



Multipurpose Amplifier with SOS feature for emergency paging services. Divided into 6 ZONES, with multiple input and output options.

## JM PA-AMP-152

### 6 ZONE PAGING AMPLIFIER

120 WATT

4 Ω-16 Ω BALANCE OUTPUT

70/100 V CONSTANT VOLTAGE OUTPUT

DIRECT SOS BUTTON FOR FIRE/EMERGENCY PAGING

3X MIC INPUT

6 ZONE OUTPUT

USB/SD/MP3/BT/AUX INPUT

2X MONITOR OUT

Multipurpose Amplifier with SOS feature for emergency paging services. Divided into 6 ZONES, with multiple input and output options.



[Back to Contents](#)

## JM P-AMP600

### PORTABLE MIXER AMPLIFIER



convenient appearance, small size, powerful power.  
8 channel mixer level input control, high and low volume adjustable, each channel volume independent control.  
with MP3 LED display (U disk MP3 input) , bluetooth connection

1 to 4 channels + 48V phantom power  
16 kinds of DSP microphone high-quality effectors  
with USB wireless MIMO Input Interface (with USB wireless MIMO use)/5VLED Lamp Output Interface

High Efficiency Class D power amplifier (digital power amplifier) : Power 600W \* 2 (8Ω)

2 channels output port 2 through and connect output port, can be connected to 48 Euro speakers

with USB Type-C mobile phone internal recording interface, music lossless transmission or live recording easy processing.

600 WATT Portable Amplifier. It can support multiple functions like Recording, Live Streaming on OTG, USB or MP3. Popularly referred to as a life savior by professionals who value its portability and flexible connectivity features.

[Back to Contents](#)







## JM SW18504

### 18" TRANSDUCER



**Thiele & Small Parameters:** Fs: 33 Hz Re: 4.9  $\Omega$  Qes: 0.35  
Qms: 7.34 Qts: 0.33 Vas: 199.87  
L Cms: 0.09 mm Sd: 0.12 m<sup>2</sup>  
Mms: 233.1 g Xmax: 15 mm Bl :  
26.3 T.m Le(1KHz): 1.44 mH

Specification	
Nominal Diameter:	457/18 mm/in
Nominal Impedance:	8 $\Omega$
Minimum Impedance:	4.9 $\Omega$
Power Handling:	1800 W
Sensitivity(1W/1m):	95.5 dB
Frequency Range:	33 - 1500 Hz
Voice Coil Diameter:	125 mm
Voice Coil Material:	CCAW
Kind Of Layer:	Inside/Outside Magnet
Outer Diameter:	280 mm
Magnet Material:	Ferrite
Paper Materials:	Taiwan Paper
Installation Information	
Overall Diameter:	471 mm
Baffle Cutout Diameter:	431 mm
Boit Circle Diameter:	451×8-Φ8
Flange & Gasket Thickness:	19 mm
Overall Depth:	201 mm
Net Weight:	21.5 KG

## JM SW18458(K)

### 18" TRANSDUCER

**Thiele & Small Parameters:** Fs: 36 Hz Re: 222.2 g 4.5  $\Omega$  Qes:  
0.33 Qms: 7.11 Qts: 0.31 Vas:  
182.05 L Cms: 0.08 mm Sd: 0.12  
m<sup>2</sup> Mms: 222.2 g Xmax: 15 mm Bl :  
26.2 T.m Le(1KHz): 1.48 mH

Specification	
Nominal Diameter:	457/18 mm/in
Nominal Impedance:	8 $\Omega$
Minimum Impedance:	4.5 $\Omega$
Power Handling:	1500 W
Sensitivity(1W/1m):	96.2 dB
Frequency Range:	36 - 1500 Hz
Voice Coil Diameter:	115 mm
Voice Coil Material:	CCAW
Kind Of Layer:	Inside/Outside Magnet
Outer Diameter:	250 mm
Magnet Material:	Ferrite
Paper Materials:	Taiwan Paper
Installation Information	
Overall Diameter:	471 mm
Baffle Cutout Diameter:	431 mm
Boit Circle Diameter:	451×8-Φ8
Flange & Gasket Thickness:	19 mm
Overall Depth:	197 mm
Net Weight:	17.8 KG



[Back to Contents](#)



JM SW18458  
18" TRANSDUCER



**Thiele & Small Parameters:** Fs: 36 Hz Re: 4.5 Ω Qes: 0.30  
Qms: 6.83 Qts: 0.29 Vas: 201.66  
L Cms: 0.09 mm Sd: 0.12 m2  
Mms: 199.2 g Xmax: 15 mm BL :  
25.9 T.m Le(1KHz): 1.43 mH

Specification	
Nominal Diameter:	457/18 mm/in
Nominal Impedance:	8 Ω
Minimum Impedance:	4.5 Ω
Power Handling:	1500 W
Sensitivity(1W/1m):	97.1 dB
Frequency Range:	36 - 1600 Hz
Voice Coil Diameter:	115 mm
Voice Coil Material:	CCAW
Kind Of Layer:	Inside/Outside Magnet
Outer Diameter:	250 mm
Magnet Material:	Ferrite
Paper Materials:	Taiwan Paper
Installation Information	
Overall Diameter:	496/458 mm
Baffle Cutout Diameter:	433 mm
Boit Circle Diameter:	474.5×8-Φ6.5 : 447.5×8-Φ6.5
Flange & Gasket Thickness:	21 mm
Overall Depth:	210 mm
Net Weight:	17 KG

JM SW18452  
18" TRANSDUCER

Thiele & Small Parameters

Fs: 58 Hz Re: 4.92 Ω Qms: 37.24  
Qes: 0.72 Qts: 0.71 BL: 24.5 T.m  
Mms: 315 g Cms: 39μ M/N Vas: 64  
L Sd: 1213.04 cm2 η0: 1.659 %

Specifications	
Nominal Diameter:	466/18 mm/in
Nominal Impedance:	8Ω
AES Power Handling:	800 W
Maximum Power:	1600 W
Sensitivity(1W/1M):	95 dB
Frequency Range:	58 - 2.5 Hz
Voice Coil Diameter:	114.5/4.5 mm/in
Winding Material:	CCAW
Former Material:	Glass Fiber
Winding Depth:	24.5 mm
Surround Material:	Polycotton
Surround Design:	Triple-roll
Magnet:	Ferrite
Paper Materials:	Malaysia Paper
Installation Information	
Overall Diameter :	466 mm
Bolt Circle Diameter:	446 mm
Baffle Cutout Diameter:	422 mm
Depth:	215 mm
Net Weight:	15.3 KG
Shipping Weight:	18.08 KG



[Back to Contents](#)

# JM SW18407

## 18" TRANSDUCER



Thiele & Small Parameters:	Fs: 49 Hz
	Re: 4.5 Ω
	Qes: 0.47
	Qms: 8.21
	Qts: 0.44
	Vas: 128.07 L
	Cms: 0.05 mm
	Sd: 0.13 m <sup>2</sup>
	Mms: 199.5 g
	Xmax: 13 mm
	BL: 24.2 T.m
	Le(1KHz): 1.55 mH

Specifications	
Nominal Diameter:	457/18 mm/in
Nominal Impedance:	8 Ω
Minimum Impedance:	4.5 Ω
Power Handling:	1000 W
Sensitivity(1W/1m):	97 dB
Frequency Range:	49 - 1500 Hz
Voice Coil Diameter:	99.5 mm
Voice Coil Material:	CCAW
Kind Of Layer:	Inside/Outside
Magnet Outer Diameter:	220 mm
Magnet Material:	Ferrite
Material:	Taiwan Paper
Installation Information:	
Overall Diameter:	461 mm
Baffle Cutout Diameter:	422 mm
Boit Circle Diameter:	442×8-Φ7
Flange And Gasket Thickness:	17 mm
Overall Depth:	208 mm
Net Weight:	13 KG

# JM SW18404

## 18" TRANSDUCER

Thiele & Small Parameters	Fs: 58 Hz
	Re: 5.22 Ω
	Qms: 20.2
	Qes: 0.93
	Qts: 0.89
	BL: 21.81 T.m
	Mms: 235.45 g
	Cms: 4μ M/N
	Vas: 64.96 L
	Sd: 1194.59 cm <sup>2</sup>
	η0: 1.28%

Specifications	
Nominal Diameter:	466/18 mm/in
Nominal Impedance:	8Ω
AES Power Handling:	700 W
Maximum Power:	1600 W
Sensitivity(1W/1M):	95 dB
Frequency Range:	58 - 2.5 Hz
Voice Coil Diameter:	99.5/4 mm/in
Winding Material:	CCAW
Former Material:	TGL
Winding Depth:	20 mm
Surround Material:	Polycotton
Surround Design:	W-roll
Magnet:	Ferrite
Paper Materials:	Malaysia Paper
Installation Information	
Overall Diameter :	466 mm
Bolt Circle Diameter:	445 mm
Baffle Cutout Diameter:	422 mm
Depth:	219 mm
Net Weight:	11.85 KG
Shipping Weight:	/ KG



[Back to Contents](#)



# JM SW15500

## 15" TRANSDUCER



**Thiele & Small Parameters** Fs: 52 Hz Re: 4.68  $\Omega$  Qms: 13.13  
Qes: 0.59  
Qts: 0.57 BL: 24.797 T.m Mms: 237.891 g Cms: 39 $\mu$  M/N Vas: 40.98  
L Sd: 865.7 cm<sup>2</sup>  $\eta$ 0: 0.95 %

Specifications	
Nominal Diameter:	402/15 mm/in
Nominal Impedance:	8 $\Omega$
AES Power Handling:	1200 W
Maximum Power:	2400 W
Sensitivity(1W/1M):	95 dB
Frequency Range:	52 - 2.5 Hz
Voice Coil Diameter:	125.5/5 mm/in
Winding Material:	CCAW
Former Material:	Glass Fibre Winding
Winding Depth:	24.5 mm
Surround Material:	Polycotton
Surround Design:	M-roll
Magnet:	Ferrite
Paper Materials:	Malaysia Paper
Installation Information	
Overall Diameter :	390 mm
Bolt Circle Diameter:	372 mm
Baffle Cutout Diameter:	356 mm
Depth:	170 mm
Net Weight:	18.25 KG
Shipping Weight:	/ KG

# JM SW15365

## 15" TRANSDUCER

**Thiele & Small Parameters** Fs: 38 Hz Re: 5.2  $\Omega$  Qes: 0.29  
Qms: 7.75 Qts: 0.28 Vas: 209.82  
L Cms: 0.16 mm Sd: 0.09 m<sup>2</sup>  
Mms: 106.2 g Xmax: 9 mm BL : 21.4 T.m Le(1KHz): 1.26 mH

Specifications	
Nominal Diameter:	381/15 mm/in
Nominal Impedance:	8 $\Omega$
Minimum Impedance:	5.2 $\Omega$
Power Handling:	600 W
Sensitivity(1W/1m):	98.1 dB
Frequency Range:	38 - 3000 Hz
Voice Coil Diameter:	86 mm
Voice Coil Material:	CCAW
Kind Of Layer:	Inside/Outside Magnet
Outer Diameter:	200 mm
Magnet Material:	Ferrite
Paper Materials:	Taiwan Paper
Installation Information	
Overall Diameter:	397 mm
Baffle Cutout Diameter:	360 mm
Boit Circle Diameter:	377×8- $\Phi$ 6.5
Flange And Gasket	
Thickness:	14 mm
Overall Depth:	171 mm
Net Weight:	8.8 KG



[Back to Contents](#)

# JM SW15401

## 15" TRANSDUCER



**Thiele & Small Parameters** Fs: 51 Hz Re: 5.22  $\Omega$  Qms: 16.5 Qes: 0.59  
Qts: 0.57 BL: 20.68 T.m Mms: 151.93 g Cms: 64 $\mu$  M/N Vas: 69.2 L  
Sd: 876.16 cm<sup>2</sup>  $\eta$ 0: 1.84 %

Specifications	
Nominal Diameter:	395/15 mm/in
Nominal Impedance:	8 $\Omega$
AES Power Handling:	500 W
Maximum Power:	1000 W
Sensitivity(1W/1M):	95 dB
Frequency Range:	51 - 4 Hz
Voice Coil Diameter:	99.5/3.9 mm/in
Winding Material:	CCAW
Former Material:	TGL
Winding Depth:	20 mm
Surround Material:	Polycotton
Surround Design:	M-roll
Magnet:	Ferrite
Paper Materials:	Malaysia Paper
Installation Information	
Overall Diameter :	395 mm
Bolt Circle Diameter:	378 mm
Baffle Cutout Diameter:	358 mm
Depth:	173 mm
Net Weight:	11.05 KG
Shipping Weight:	11.55 KG

# JM SW15302

## 15" TRANSDUCER

**Thiele & Small Parameters** Fs: 45 Hz Re: 5.49  $\Omega$  Qms: 10.18  
Qes: 0.63 Qts: 0.59 BL: 17.19  
T.m Mms: 119.39 g Cms: 104 $\mu$   
M/N Vas: 114 L Sd: 881.41 cm<sup>2</sup>  
 $\eta$ 0: 1.61 %

Specifications	
Nominal Diameter:	395/15 mm/in
Nominal Impedance:	8 $\Omega$
AES Power Handling:	300 W
Maximum Power:	600 W
Sensitivity(1W/1M):	94 dB
Frequency Range:	45 - 3.5 Hz
Voice Coil Diameter:	75.5/3 mm/in
Winding Material:	CCAW
Former Material:	TGL
Winding Depth:	15.5 mm
Surround Material:	Polycotton
Surround Design:	M-roll
Magnet:	Ferrite
Paper Materials:	Malaysia Paper
Installation Information	
Overall Diameter :	395 mm
Bolt Circle Diameter:	378 mm
Baffle Cutout Diameter:	358 mm
Depth:	173 mm
Net Weight:	11.05 KG
Shipping Weight:	11.55 KG



[Back to Contents](#)





JM CD-760  
COMPRESSION DRIVER



Throat Diameter:	50mm/2 inch
Nominal Impedance:	8Ω
RMS Power Input:	110W
MAX Power Input:	220W
Sensitivity 1W/1M:	104dB
Frequency Range:	600~20kHz
Voice Coil Diameter:	72mm/2.8 inch
Voice Winding Material:	Copper
Diaphragm Material:	titanium
Magnet:	Ferrite Ring
Overall Diameter:	170mm
Baffle Cutout Diameter:	/
Depth:	78mm
Net Weight:	4.05kg
Shipping Weight:	4.2kg
Shipping Box(4Unit):	37*20*18.6 cm

JM CD-750  
COMPRESSION DRIVER

Throat Diameter:	38mm/1.5 inch
Nominal Impedance:	8Ω
RMS Power Input:	110W
MAX Power Input:	220W
Sensitivity 1W/1M:	107.5dB
Frequency Range:	800~18kHz
Voice Coil Diameter:	75mm/3 inch
Voice Winding Material:	Aluminium
Diaphragm Material:	titanium
Magnet:	Ferrite Ring
Overall Diameter:	170mm
Baffle Cutout Diameter:	100
Depth:	64mm
Net Weight:	4.36kg
Shipping Weight:	4.44kg
Shipping Box(4Unit):	37*20*15.6 cm



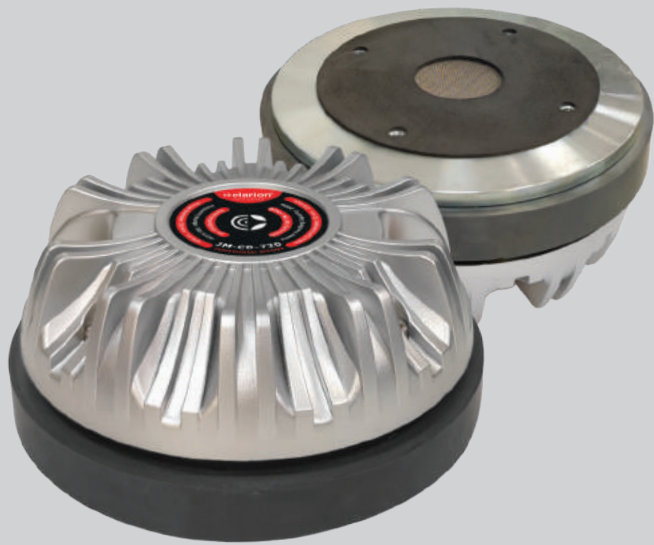
[Back to Contents](#)



# JM CD-720

## COMPRESSION DRIVER

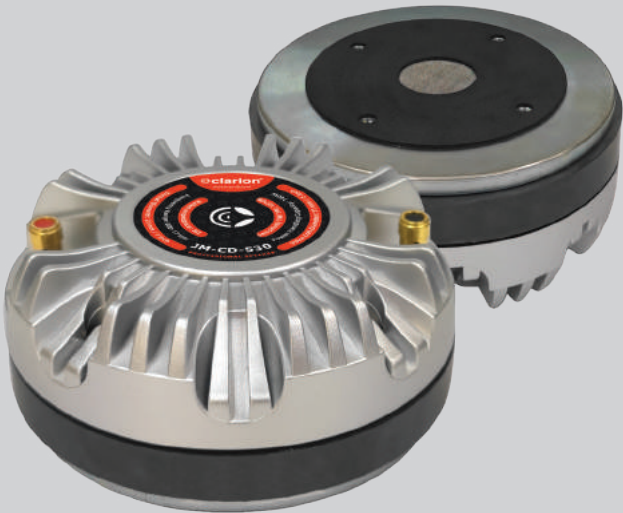
Throat Diameter:	38mm/1.5 inch
Nominal Impedance:	8Ω
RMS Power Input:	100W
MAX Power Input:	200W
Sensitivity 1W/1M:	104dB
Frequency Range:	700~18kHz
Voice Coil Diameter:	72mm/2.8 inch
Voice Winding Material:	Copper
Diaphragm Material:	titanium
Magnet:	Ferrite Ring
Overall Diameter:	170mm
Baffle Cutout Diameter:	/
Depth:	79mm
Net Weight:	4.1kg Shipping
Weight:	4.3kg
Shipping Box(4Unit):	37*20*18.6 cm



# JM CD-530

## COMPRESSION DRIVER

Throat Diameter:	25mm/1 inch
Nominal Impedance:	8Ω
RMS Power Input:	70W
MAX Power Input:	140W
Sensitivity 1W/1M:	107dB
Frequency Range:	800~17kHz
Voice Coil Diameter:	51mm/2 inch
Voice Winding Material:	CCAW
Diaphragm Material:	titanium
Magnet:	Ferrite Ring
Overall Diameter:	135mm
Baffle Cutout Diameter:	/
Depth:	60mm
Net Weight:	2.48kg
Shipping Weight:	2.65kg
Shipping Box(8Unit):	32*29.6*14 cm



[Back to Contents](#)

## JM CD-520

### COMPRESSION DRIVER

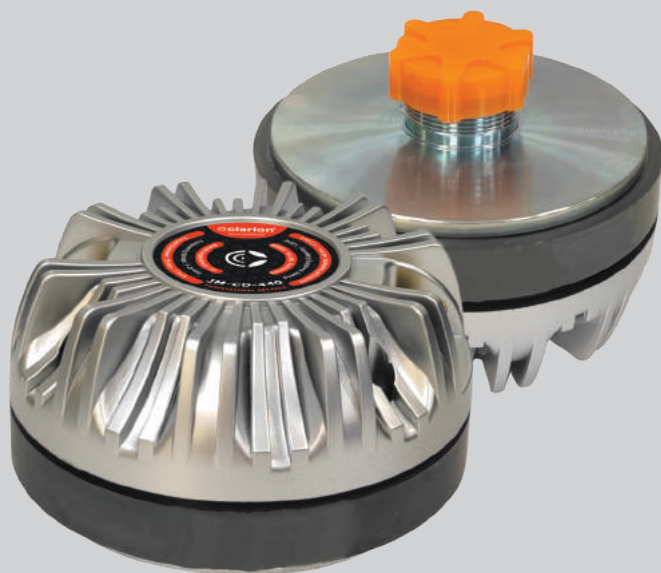


<b>Throat Diameter:</b>	25mm/1 inch
<b>Nominal Impedance:</b>	8Ω
<b>RMS Power Input:</b>	80W
<b>MAX Power Input:</b>	160W
<b>Sensitivity 1W/1M:</b>	106dB
<b>Frequency Range:</b>	1~20kHz
<b>Voice Coil Diameter:</b>	51mm/2 inch
<b>Voice Winding Material:</b>	CCAW
<b>Diaphragm Material:</b>	titanium
<b>Magnet:</b>	Ferrite Ring
<b>Overall Diameter:</b>	134mm
<b>Baffle Cutout Diameter:</b>	/
<b>Depth:</b>	73mm
<b>Net Weight:</b>	2.25kg
<b>Shipping Weight:</b>	2.45kg
<b>Shipping Box(8Unit):</b>	32*29.6*17.4 cm

## JM CD-440

### COMPRESSION DRIVER

<b>Throat Diameter:</b>	25mm/ 1 inch
<b>Nominal Impedance:</b>	8Ω
<b>RMS Power Input:</b>	60W
<b>MAX Power Input:</b>	120W
<b>Sensitivity 1W/1M:</b>	104dB
<b>Frequency Range:</b>	1~20kHz
<b>Voice Coil Diameter:</b>	44mm/1.7 inch
<b>Voice Winding Material:</b>	CCAW
<b>Diaphragm Material:</b>	titanium
<b>Magnet:</b>	Ferrite Ring
<b>Overall Diameter:</b>	115mm
<b>Baffle CutoutDiameter:</b>	/
<b>Depth:</b>	75mm
<b>Net Weight:</b>	1.5kg
<b>Shipping Weight:</b>	1.7kg
<b>Shipping Box(12Unit):</b>	37.7*28*18 cm



[Back to Contents](#)





JM CD-340(B)  
COMPRESSION DRIVER

Throat Diameter:	25mm/ 1 inch
Nominal Impedance:	8Ω
RMS Power Input:	60W
MAX Power Input:	120W
Sensitivity 1W/1M:	104dB
Frequency Range:	1~20kHz
Voice Coil Diameter:	34mm/1.33 inch
Voice Winding Material:	CCAW
Diaphragm Material:	titanium
Magnet:	Ferrite Ring
Overall Diameter:	90mm
Baffle Cutout Diameter:	/
Depth:	67mm
Net Weight:	0.95kg
Shipping Weight:	0.96kg
Shipping Box(16Unit):	40.2*23*16 cm

JM CD-340  
COMPRESSION DRIVER

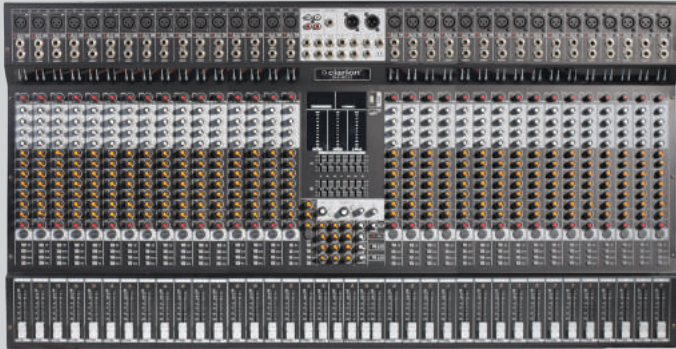
Throat Diameter:	25mm/1 inch
Nominal Impedance:	8Ω
RMS Power Input:	60W
MAX Power Input:	120W
Sensitivity 1W/1M:	104dB
Frequency Range:	1~20kHz
Voice Coil Diameter:	34mm/1.33 inch
Voice Winding Material:	CCAW
Diaphragm Material:	titanium
Magnet:	Ferrite Ring
Overall Diameter:	90mm
Baffle Cutout Diameter:	/
Depth:	50mm
Net Weight:	0.95kg
Shipping Weight:	0.96kg
Shipping Box(16Unit):	40.2*23*13 cm



[Back to Contents](#)







## JM K-MIX32

### 32 CHANNEL MIXER

Adopt 2-in-1 XLR input/6.5 plug input  
 Low noise channel built-in effects  
 Channel settings and gain switching, 4-band equalization  
 Master control stereo 7-band equalization  
 +48V phantom power  
 Independent 10-bit level display for each channel  
 10-digit high-precision level display,  
 1 set of recording input and output, monitoring headphone output  
 1 set of master (line) output and 1 set of mono output  
 USB channel and stereo channel play independently  
 Built-in Bluetooth MP3 computer link  
 Support U disk recording and computer recording function  
 Built-in preset Alice 199DSP digital effector  
 Monitoring per channel  
 Channel mute with one click  
 6 AUX send  
 4 group output

## JM K-MIX24

### 24 CHANNEL MIXER

Adopt 2-in-1 XLR input/6.5 plug input  
 Low noise channel built-in effects  
 Channel settings and gain switching, 4-band equalization  
 Master control stereo 7-band equalization  
 +48V phantom power  
 Independent 10-bit level display for each channel  
 10-digit high-precision level display,  
 1 set of recording input and output, monitoring headphone output  
 1 set of master (line) output and 1 set of mono output  
 USB channel and stereo channel play independently  
 Built-in Bluetooth MP3 computer link  
 Support U disk recording and computer recording function  
 Built-in preset Alice 199DSP digital effector  
 Monitoring per channel  
 Channel mute with one click  
 6 AUX send  
 4 group output



[Back to Contents](#)



## JM K-MIX16

### 16 CHANNEL MIXER

- Adopt 2-in-1 XLR input/6.5 plug input
- Low noise channel built-in effects
- Channel settings and gain switching, 4-band equalization
- Master control stereo 7-band equalization
- +48V phantom power
- Independent 10-bit level display for each channel
- 10-digit high-precision level display,
- 1 set of recording input and output, monitoring headphone output
- 1 set of master (line) output and 1 set of mono output
- USB channel and stereo channel play independently
- Built-in Bluetooth MP3 computer link
- Support U disk recording and computer recording function
- Built-in preset Alice 199DSP digital effector
- Monitoring per channel
- Channel mute with one click
- 4 AUX send
- 4 group output

[Back to Contents](#)



# JM MX-KH24

## 24 CHANNEL MIXER



- 24 Ch Mixer
- Individual Channel Phantom
- Usb/Bt Input
- Aux/Fx Controls
- Sliding Channel Controller
- MP3 player with buletooth, recording function
- Audio interface with computer
- 3 brand channel EQ
- 2 Aux send, 2 return
- 60mm logarithmictaper fader
- New 99 DSP effect
- 2 Stereo power output
- +48V phantom power
- Double marshalling-new function

# JM MX-KH16

## 16 CHANNEL MIXER

- 16 Ch Mixer
- Individual Channel Phantom
- Usb/Bt Input
- Aux/Fx Controls
- Sliding Channel Controller
- MP3 player with buletooth, recording function
- Audio interface with computer
- 3 brand channel EQ
- 2 Aux send, 2 return
- 60mm logarithmictaper fader
- New 99 DSP effect
- 2 Stereo power output
- +48V phantom power
- Double marshalling-new function



[Back to Contents](#)

## JM MX-KB16

### 16 CHANNEL MIXER



16 Ch Mixer  
 Individual Channel Phantom +48v  
 3aux Output  
 7 Band Eq  
 Usb/Bt Input  
 Aux F/X Control  
 2x Main Output  
 256 Dsp

## JM MX-KB12

### 12 CHANNEL MIXER

12 Ch Mixer  
 Individual Channel Phantom +48v  
 3aux Output  
 7 Band Eq  
 Usb/Bt Input  
 Aux F/X Control  
 2x Main Output  
 256 Dsp



[Back to Contents](#)





## JM MX-KB8

### 8 CHANNEL MIXER

8 Ch Mixer  
 Individual Channel Phantom +48v  
 3aux Output  
 7 Band Eq  
 Usb/Bt Input  
 Aux F/X Controls  
 2x Main Output  
 256 Dsp

[Back to Contents](#)

Mixer (KB Series)

## JM MC12

### 12 CHANNEL MIXER



12-channel mixer

Adopt 2-in-1 Canon input / 6.5 plug input

Low noise channel with built-in effect stereo

7 Band Eq

+48V phantom power supply

10 bit high-precision level display, built-in delay effect device

1 set of recording input and output, monitor headphone output

1 set of main control (line) output and 1 set of mono output

USB channel and stereo channel independently play the built-in Bluetooth MP3 computer link

Support u disk recording computer recording function

Built in preset 16dsp digital effect device

Monitor per channel

Channel one key mute

## JM MC8

### 8 CHANNEL MIXER

8-channel mixer

Adopt 2-in-1 Canon input / 6.5 plug input

Low noise channel with built-in effect stereo

7 Band Eq

+48V phantom power supply

10 bit high-precision level display, built-in delay effect device

1 set of recording input and output, monitor headphone

output 1 set of main control (line) output and 1 set of mono output

USB channel and stereo channel independently play the built-in Bluetooth MP3 computer link

Support u disk recording computer recording function

Built in preset 16dsp digital effect device

Monitor per channel

Channel one key mute



[Back to Contents](#)





## JM MC6

### 6 CHANNEL MIXER

6-channel mixer

Adopt 2-in-1 Canon input / 6.5 plug input

Low noise channel with built-in effect stereo

7 Band Eq

+48V phantom power supply

10 bit high-precision level display, built-in delay effect device

1 set of recording input and output, monitor headphone

output 1 set of main control (line) output and 1 set of mono output

USB channel and stereo channel independently play the built-in Bluetooth MP3 computer link

Support u disk recording computer recording function

Built in preset 16dsp digital effect device

Monitor per channel

Channel one key mute

## JM MC4

### 4 CHANNEL MIXER

4-channel mixer

4-Adopt 2-in-1 Canon input / 6.5 plug input

Low noise channel with built-in effect stereo

7 Band Eq

3-+48V phantom power supply

10 bit high-precision level display, built-in delay effect device

1 set of recording input and output, monitor headphone

output 1 set of main control (line) output and 1 set of mono output

USB channel and stereo channel independently play the built-in Bluetooth MP3 computer link

Support u disk recording computer recording function

Built in preset 16dsp digital effect device

Monitor per channel

Channel one key mute



[Back to Contents](#)

Mixer (MC Series)

## JM MX8

### 8 CHANNEL MIXER



- 8-channel mixer
- 6-channel mono input
- 1 channel stereo sound input
- 1 AUX send
- RCA CD input recording RCA output
- Built in 99dsp effector
- Built in Bluetooth mp3
- Support USB flash disk recording and computer recording
- Built in sound card to link computer
- Built in 48V phantom power supply
- 7-Band equalizer
- Can be connected to 12V car power supply

## JM MX6

### 6 CHANNEL MIXER

- 6-channel mixer
- 4-channel mono input
- 1 channel stereo sound input
- 1 AUX send
- RCA CD input recording RCA output
- Built in 99dsp effector
- Built in Bluetooth mp3
- Support USB flash disk recording and computer recording
- Built in sound card to link computer
- Built in 48V phantom power supply
- 7-Band equalizer
- Can be connected to 12V car power supply



[Back to Contents](#)





## JM MX4

### 4 CHANNEL MIXER

- 4-channel mixer
- 2-channel mono input
- 1 channel stereo sound input
- 1 AUX send
- RCA CD input recording RCA output
- Built in 99dsp effector
- Built in Bluetooth mp3
- Support USB flash disk recording and computer recording
- Built in sound card to link computer
- Built in 48V phantom power supply
- 7-Band equalizer
- Can be connected to 12V car power supply

[Back to Contents](#)



## JM D4-LIVE 4 CHANNEL MIXER

OTG function, Type C interface which is used to directly connect mobile devices

Type C interface contact with computer

Bluetooth function

2/4 mono + 1 stereo channels input

1 AUX monitor sending

2 AUX input of 3.5mm

1 3.5mm condenser microphone interface

1 3.5mm phone live broadcast interface

New 16 scene DSP effect

1 stereo power output

+48V phantom power

## JM XU3 3 CHANNEL MIXER

OTG function, Type C interface which is used to directly connect mobile devices

Type C interface, Track recording function connect with computer

4 kinds DSP scene effect

3,5mm 5v condenser mic

3.5 mm AUX input interface

3.5 mm phone live broadcast function interface

3.5 mm AUX output interface

Bluetooth function

Refer to: We media, Home theater, computer audio interface

phone live broadcast, live show as so on

New chip with high quality recording quality



[Back to Contents](#)



## JM B6-LIVE

### 6 CHANNEL MIXER



- MP3 player with recording function
- Bluetooth function
- USB interface contact with computer
- 4 mono + 1 stereo channels input
- 2 band channel EQ
- 1 3.5mm condenser microphone interface
- 1 3.5mm phone live broadcast interface
- Delay and repeat effect
- 1 stereo power output
- +48V phantom power

## JM-U4

### 4 CHANNEL MIXER

- MP3 player with recording function
- Bluetooth function
- 2 mono + 1 stereo channels input
- 2 band channel EQ
- Delay and repeat effect
- USB interface contact with computer
- 1 stereo power output
- +48V phantom power



[Back to Contents](#)

## JM U6

### 6 CHANNEL MIXER



MP3 player with recording function

Bluetooth function

4 mono + 1 stereo channels input

2 band channel EQ

Delay and repeat effect

USB interface contact with computer

1 stereo power output

+48V phantom power

[Back to Contents](#)



 **clarion**<sup>®</sup>  
sound profound

MICROPHONES



[www.clarionaudio.com](http://www.clarionaudio.com)



## JM WL-305

### DUAL CHANNEL WIRELESS MICROPHONE

<b>Channel:</b>	Dual Channel
<b>Frequency range:</b>	640-690MHz
<b>Modulation Mode:</b>	pi/4 DQPSK
<b>Frequency stability:</b>	±0.005%
<b>Sensitivity :</b>	>105dB
<b>T.H.D:</b>	<0.5%
<b>Frequency response:</b>	50Hz-18KHz±3dB
<b>S/N ratio:</b>	>98dB(1KHz-A)
<b>Battery:</b>	AA*2
<b>Power Supply:</b>	12-15V DC, power adapter
<b>Operation Temperature:</b>	-10°C~50°C
<b>Cover Range:</b>	About 100M (in open space) max upto 200M

## JM WL-206

### DUAL CHANNEL WIRELESS MICROPHONE

<b>Channel:</b>	Dual Channel
<b>Frequency range:</b>	640-690MHz
<b>Modulation Mode:</b>	pi/4 DQPSK
<b>Frequency stability:</b>	±0.005%
<b>Sensitivity :</b>	>105dB
<b>T.H.D:</b>	<0.5%
<b>Frequency response:</b>	50Hz-18KHz±3dB
<b>S/N ratio:</b>	>98dB(1KHz-A)
<b>Battery:</b>	AA*2
<b>Power Voltage:</b>	12-15V DC, power adapter
<b>Operation Temperature:</b>	-10°C~50°C
<b>Cover Range:</b>	About 100M (in open space )



[Back to Contents](#)





## JM WL-200

### WIRELESS MICROPHONE

Frequency range:	640-690MHz
Frequency stability:	<±10ppm
Audio dynamic range:	>100db
T.H.D:	<0.5%
Frequency response:	30Hz-20KHz
Output plug:	XLR balance ,1/4"unbalance plug
Output voltage:	1/4"-300mV
Operation Temperature:	-10°C~50°C
Receiver	
Polar pattern:	Dynamic cardioid
Outputs:	Individual XLR outputs per channel
Carrier frequency range:	640-690MHz
Modulation Mode:	pi/4 DQPSK
Frequency response:	30Hz-20KHz
S/N ratio:	>105dB(A)
Channel:	50CH X 2
Handheld Transmitter	
RF Power output:	≤10mW(Depend on the country standard)
Transmit frequency stability:	10PPM
Dynamic range:	≥100dB(A)
Frequency response:	30Hz-20KHz
Max Input Sound Pressure:	130dB SPL
Microphone Pickup:	Dynamic
Battery:	AA*2

## JM WL-110

### WIRELESS MICROPHONE

Channel:	One channel
Frequency range:	618-634MHz
Sensitivity:	Offset degree is equal to 25KHz, the 6dB V, S/N >60dB
Frequency stability:	±0.005%
Frequency response:	60Hz-15KHz±3dB
T.H.D:	<0.5%
S/N ratio:	>98dB(1KHz-A)
RF output power:	≤4.5mW
Battery:	AA*2
Power Supply:	12V DC, power adapter
Operation Temperature:	-10°C~50°C
Cover Range:	About 60-80M (in open space )



[Back to Contents](#)





## JM WL-107

### WIRELESS MICROPHONE

<b>Channel:</b>	One Channel
<b>Frequency range:</b>	250-256MHz
<b>Sensitivity:</b>	Offset degree is equal to 25KHz, the 6dB V, S/N >60dB
<b>Modulation Mode:</b>	FM
<b>Frequency stability:</b>	±0.005%
<b>Frequency response:</b>	40Hz-18KHz±3dB
<b>T.H.D:</b>	<0.4%
<b>Maximum Deviation:</b>	±45KHz
<b>RF output power:</b>	≤10mW
<b>Battery:</b>	AA*2
<b>Operation Temperature:</b>	-10°C~50°C
<b>Cover Range:</b>	About 60M (in open space)

## JM WL-101

### WIRELESS MICROPHONE

<b>Carrier frequency range :</b>	680-690MHz
<b>Modulation Mode:</b>	FM adjustable frequency
<b>Max offset frequency:</b>	±30KHz
<b>Frequency response:</b>	50Hz-15KHz
<b>S/N ratio :</b>	>105dB(A)
<b>Distortion(1KHz):</b>	<0.3%
<b>Operation Temperature:</b>	-10°C~50°C
<b>Working range :</b>	200FT( open area)
<b>Receiver</b>	
<b>Channel :</b>	30*1
<b>Stray radiation suppression :</b>	≥80dB
<b>Image rejection:</b>	≥80dB
<b>Sensitivity:</b>	5dBu
<b>Working current:</b>	≤150mA
<b>Battery :</b>	18650 lithium battery
<b>Battery capacity :</b>	1200mAH
<b>Charging time :</b>	3-4hours
<b>Working time :</b>	7-8 hours
<b>Handheld Transmitter</b>	
<b>RF power output :</b>	≤10mW(Depend on the country standard)
<b>Transmit frequency stability:</b>	<30ppm
<b>Dynamic range :</b>	≥100dB(A)
<b>Frequency response:</b>	50Hz-15KHz
<b>Max Input Sound Pressure:</b>	130dB SPL
<b>Microphone Pickup :</b>	Dynamic
<b>Battery:</b>	3.7V 18650 lithium battery



[Back to Contents](#)

# JM UM-WL-MAX

## WIRELESS MICROPHONE



### UHF Universal wireless microphone

Time specification	
Frequency range:	500-938 MHZ
Number of channels:	20
Oscillation mode:	PLL phase-locked-loop loop
Frequency stability:	± 10ppm
RF power:	10 dBm
Audio frequency sound:	40 ~ 18,000 Hz
Distortion degree:	0.5%
Battery specification:	built-in lithium battery 3.7V /
Battery life:	750 mAh
	about 5 hours (fully saturated)

### Receiver technical specification

Frequency range:	500-938 MHZ
Number of channels:	20 * 2
Oscillation mode:	PLL phase-locked-loop loop
Frequency stability:	± 10 ppn
Receiving sensitivity:	-95 dBm
Audio frequency sound:	40 ~ 18,000 Hz
Distortion degree:	0.5%
Signal-to-noise ratio:	90dB
Audio output:	300 mv (max.)
Battery specification:	built-in battery 3.7V / 750 mAh
Battery life:	about 4 hours (charge at full saturation)

[Back to Contents](#)



## JM WM-560

### DYNAMIC WIRED MICROPHONE

<b>Body Material:</b>	Metal
<b>Capsule Type:</b>	Dynamic
<b>Frequency Response:</b>	50Hz-14KHz
<b>Polar Pattern:</b>	Uni-directional
<b>Output impedance:</b>	600Ω±30%(at 1KHz)
<b>Sensitivity:</b>	-51(±3)dB(at 1KHz)(0db=1V/Pa)
<b>Cable:</b>	φ6.0*5M

Capture studio-quality audio with this high-performance microphone. Perfect for recording vocals, instruments, or podcasts, it delivers crisp, clear sound that will take your recordings to the next level. Whether you're a musician, podcaster, or video creator, this microphone is a great choice for capturing professional-sounding audio.

## JM WM-470

### DYNAMIC WIRED MICROPHONE

<b>Body Material:</b>	Metal
<b>Capsule Type:</b>	Dynamic
<b>Frequency Response:</b>	60-13KHz
<b>Polar Pattern:</b>	Uni-directional
<b>Output impedance:</b>	600Ω±10%
<b>Sensitivity:</b>	-52±3dB
<b>Cable:</b>	φ6.0*5M

Precision Cardioid to deliver the Highest Levels of Clarity. Cardioid vocal microphone offers an extended high frequency response and rugged construction to withstand the rigors of multiple usage.



[Back to Contents](#)





**JM WM-380**  
DYNAMIC WIRED MICROPHONE

Body Material:	Metal
Capsule Type:	Dynamic
Frequency Response:	60Hz-13KHz
Polar Pattern:	Uni-directional
Output impedance:	600Ω±10%
Sensitivity:	-52±3dB(at 1KHz)
Cable:	φ6.0*5M

A premium vocal microphone, This captures subtlety with accurate detail to deliver clear articulation, precise vocal reproduction for live performance. the special mount decreases handling noise even during live events.

**JM WM-200**  
DYNAMIC WIRED MICROPHONE

Cable:	4M
Type:	Dynamic
Impedance:	600Ω (± 15%)
Sensitivity:	-51 ±3dB (at 1KHz) 0dB=1V/Pa
Direction:	Uni-directional
Frequency:	60Hz - 15KHz

The Most Unique and Proprietary Design , with the best Vocal , to deliver you uncompromised clarity at very economical prices



[Back to Contents](#)



## JM WM-98XLR

### DYNAMIC WIRED MICROPHONE

<b>Impedance:</b>	600Ω
<b>Sensitivity:</b>	2.5mV/Pa
<b>Frequency:</b>	50 - 12000Hz
<b>Cable:</b>	5 mtrs low Noise
<b>Accessories:</b>	holder, zipper bag

All Purpose Robust PA Microphone  
3-pin Professional XLR Connector unidirectional

## JM WM-107XLR

### DYNAMIC WIRED MICROPHONE

<b>Impedance:</b>	600Ω
<b>Sensitivity:</b>	2.5mV/Pa
<b>Frequency:</b>	50 - 12000Hz
<b>Cable:</b>	5 mtrs low Noise
<b>Accessories:</b>	holder, zipper bag

All Purpose Robust PA Microphone  
3-pin Professional XLR Connector unidirectional



[Back to Contents](#)



**JM WM-101XLR**  
DYNAMIC WIRED MICROPHONE

Impedance:	600Ω
Sensitivity:	2.5mV/Pa
Frequency:	50 - 12000Hz
Cable:	5 mtrs low Noise
Accessories:	holder, zipper bag

All Purpose Robust PA Microphone  
3-pin Professional XLR Connector unidirectional

**JM WM-99XLR**  
DYNAMIC WIRED MICROPHONE

Impedance:	600Ω
Sensitivity:	2.5mV/Pa
Frequency:	50 - 12000Hz
Cable:	5 mtrs low Noise
Accessories:	holder, zipper bag

All Purpose Robust PA Microphone  
3-pin Professional XLR Connector unidirectional



[Back to Contents](#)





**JM WM-62A**  
CONDENSOR WIRED MICROPHONE

Cable:	5 m
Frequency:	70 - 14KHz
Sensitivity:	2.5mV/Pa
Impedance:	600Ω

Dynamic Unidirectional Wired microphone capsule type:	dynamic
polar pattern:	uni-directional

**JM WM-11DX**  
CONDENSOR WIRED MICROPHONE

Frequency:	100 - 15000Hz
Sensitivity:	5.0mV/Pa
Impedance:	1000Ω
Operates on:	1 x 1.5V (UM-3) Pencil cell
Unidirectional Cable:	5m

Shielded low Noise  
Fixed tie clip



[Back to Contents](#)



**JM WM-26DX**  
CONDENSOR WIRED MICROPHONE

Frequency:	100 - 15000Hz
Sensitivity:	5.0mV/Pa
Impedance:	1000Ω
Operates on:	1 x 1.5V (UM-3) Pencil cell
Unidirectional Cable:	5m

Shielded low Noise  
Fixed tie clip

**JM WM-35DX**  
CONDENSOR WIRED MICROPHONE

Frequency:	100 - 15000Hz
Sensitivity:	5.0mV/Pa
Impedance:	1000Ω
Operates on:	1 x 1.5V (UM-3) Pencil cell
Unidirectional Cable:	5m

Shielded low Noise  
Fixed tie clip



[Back to Contents](#)



## JM WM-62CC

### CONDENSOR WIRED MICROPHONE

<b>Microphone Element:</b>	Condenser Cardioid
<b>Frequency:</b>	50 - 16000Hz
<b>Sensitivity:</b>	5.6mV/Pa
<b>Impedance:</b>	1000
<b>Cable Length:</b>	5m

Ergonomic design for comfortable and convenient use.  
Allows hands-free use and reduces pickup of stray room noises.

[Back to Contents](#)





## JM IM351

### INTERVIEW MICROPHONE

Frequency respons:	50-16000Hz
Directivity:	Uni-directivity
Output impendence:	2K±2% unbalance
Sensitivity:	10-20mV(short) 70-90mV(long)
(1-3)m S/N:	> 72dB(at 1KHz 1Pa)
Inherent S/N:	<22dB(0dB=20μPa)
Wind noise:	<55dB(no windscreen), <45dB(with windscreen)
Maximum output voltage:	114dB
Dynamic range:	no more than 92dB
Working temperature:	(0-60°C)
Power supply:	DCAA1.5V *1 or phantom 48V

Adapts array signal processing technology for highsensitivity and long pickupdistance Optional cardioid and hypercardioid directivity satisfies diferent application Alloy material housing design efectively to reduce the RFsignal interference and improve the recording performance Specialty designed for interview,supplied with profesional XLRcable

## JM IM350

### INTERVIEW MICROPHONE

Frequency response:	50-16000Hz
Directivity:	Uni-directivity
Output impendence:	2K±2% unbalance
Sensitivity:	10-20mV(short) 70-90mV(long)
(1-3)m S/N:	> 72dB(at 1KHz 1Pa)
Inherent S/N:	<22dB(0dB=20μPa)
Wind noise:	<55dB(no windscreen), <45dB(with windscreen)
Maximum output voltage:	114dB
Dynamic range:	no more than 92dB
Working temperature:	(0-60°C)
Power supply:	DCAA1.5V *1 or phantom 48V

Adapts array signal processing technology for highsensitivity and long pickupdistance Optional cardioid and hypercardioid directivity satisfies diferent application Alloy material housing design efectively to reduce the RFsignal interference and improve the recording performance Specialty designed for interview,supplied with profesional XLRcable



[Back to Contents](#)



## JM CM80

### CONDENSOR MICROPHONE

<b>Frequency response:</b>	50-16000Hz
<b>Output impedance:</b>	2K $\Omega$ ±2% unbalance
<b>S/N:</b>	>72dB (at 1KHz 1Pa)
<b>Maximum output voltage:</b>	114dB
<b>Working temperature:</b>	(0-60°C)
<b>Power supply:</b>	DCAA1.5V×1 /phantom 48V

## JM CM20

### CONFERENCE MICROPHONE

<b>Frequency range:</b>	50Hz ~ 19K
<b>Sensitivity:</b>	-38dB (± 2dB)
<b>S/N Ratio:</b>	> 58dB
<b>T.H.D:</b>	1%
<b>Maximum SPL:</b>	<120dB
<b>Impedance:</b>	<100 $\Omega$
<b>Power:</b>	DCAA 1.5V×2
<b>External power supply:</b>	DC9V ~ 12V; phantom 48V

Volume/Ding Dong Toggle  
Options



[Back to Contents](#)

JM CM17  
CONFERENCE MICROPHONE

Type of Power:	DC 1.5V or 48V phantom power
Sensitivity:	(-35±1)dB
Frequency Response:	(100-15000)HZ
Type of output:	XLR balance

Volume Button



JM CM11  
CONFERENCE MICROPHONE

Type of Power:	DC 1.5V or 48V phantom power
Sensitivity:	(-35±1)dB
Frequency Response:	(100-15000)HZ
Type of output:	XLR balance

Seperate Ding/Dong Toggle



[Back to Contents](#)





## JM WM-KARA

### KARAOKE MICROPHONE

**Frequency response:** 50 - 16000 hz

**Sensitivity:** 2.5mv / Pa

**Impedance:** 600Ω

Unidirectional Dynamic  
Microphone Economical

## JM WM-KARA2

### KARAOKE MICROPHONE

**Frequency response:** 50 - 16000 hz

**Sensitivity:** 2.5mv / Pa

**Impedance:** 600Ω

Unidirectional Dynamic  
Microphone Economical



[Back to Contents](#)

**JM MH2**

MICROPHONE HOLDER

**JM MS4**

MICROPHONE HOLDER

Microphone Stand, METAL BASE

**JM MS3**

MICROPHONE HOLDER

Microphone Stand, METAL BASE

**JM MS5**

MICROPHONE HOLDER

Microphone Stand, METAL BASE

[Back to Contents](#)







JM DK-7L  
DRUM KIT MICROPHONE SET



Element:	Moving coil Dynamic
Polar pattern:	Uni-Directional
Sensitivity	+58dB+-2dB(1v/pa)
Frequency response:	20HZ-10KHZ
Output impedance:	≤200Ω

Snare drum	
Element:	Moving coil Dynamic
Polar pattern:	Uni-Directional
Sensitivity:	+54dB+-2dB(1v/pa)
Frequency response:	20HZ-16KHZ
Output impedance:	≤200Ω

Condenser mic	
Element:	Back electret condenser
Polar pattern:	Uni-Directional
Sensitivity:	45dB+-2dB(0dB=1v/pa at 1 KHZ)
Frequency response:	60HZ-16KHZ
Output impedance:	≤2800
S/N ratio:	over 60dB
Max input s.p.l:	136 dB(Phantom)
Operating voltage:	Battery 1.5v & phantom power 9v-48v

JM DK-5L  
DRUM KIT MICROPHONE SET

Element:	moving coil Dynamic
Polar pattern:	Uni-Directional
Sensitivity	+58dB+-2dB(1v/pa)
Frequency response:	20HZ-10KHZ
Output impedance:	≤200Ω

Snare drum	
Element:	moving coil Dynamic
Polar pattern:	Uni-Directional
Sensitivity:	+54dB+-2dB(1v/pa)
Frequency response:	20HZ-16KHZ
Output impedance:	≤200Ω

Condenser mic	
Element:	Back electret condenser
Polar pattern:	Uni-Directional
Sensitivity:	-45dB+-2dB(0dB=1v/pa at 1 KHZ)
Frequency response:	60HZ-16KHZ
Output impedance:	≤2800
S/N ratio:	over 60dB
Max input s.p.l:	136 dB(Phantom)
Operating voltage:	Battery 1.5v&phantom power 9v-48v



[Back to Contents](#)

**clarion®** | KARAOKE  
sound profound SERIES





# JM COVR-LA

## PORTABLE SINGLE COLUMN SPEAKER

Driver Units Size:	Woofer 30.48 CMS Mid-range 11.5 CMS Tweeter 2.5 CMS
Output Power(RMS):	350W
Function	Usb/Tf/Fm/Mic/Bt/Tws 2pcs Hi Class Uhf Microphones 2xmhc/2xguitar /1xotg Input Perfect For Live Videos Monitor Out Multi Speaker Connectivity Recording Function Battery : 12v 12mah For Long Backup Nl4 Speakon Connectors

# COMBO4 : COVR-AMP-506D

## JM COVR-SPK-8D

### KARAOKE AMPLIFIER WITH SPEAKERS

CLASS D AMPLIFIER 400 WATT	Dsp/echo/reverb/digital Controller 2x hi-fidelity microphones 2aux input and 1 x aux Output 2x mic input 1x coaxial/ix optical input
Stereo Output Power 8Ω:	2x120W
Stereo Output Power 4Ω:	2X200W
Frequency Response:	20Hz-20kHz+-0.3dB
THD:	<0.05%8 Ω 1kHz
S/H Ratio:	>105dB
Slew Rate:	30-45v/uS
Input Impedance:	20k Ω (balance)/10k Ω (unbalance)
Input Sensitivity Height:	0.7 (mv/8 Ω)
8" WOOFER 400 WATT	2xnl4 speakon connector German water paint wooden enclosure Multi function (hanging/ stand) optional Crystal clear sound
Woofer Drive:	21cm/8 Ohms/200 Watts
Tweeter Drive:	12.6 cm/8 Ohms/30Watts



clarion® JM-COVR-AMP-506D & JM-COVR-SPK-8D is a breakthrough configuration for enmasse music instruction or sing-along. It comes with a combination of karaoke, Class D amplifier, two UHF microphones, 8" Wooden Speaker and Extra Bass and topped up with Special Effects to stream out your creativity.

[Back to Contents](#)





## COMBO3 : COVR-AMP-152 JM COVR-SPK-8W KARAOKE AMPLIFIER WITH SPEAKERS

2x high class microphone  
Digital amplifier  
Echo/preset/mic functions  
300 Watt  
USB/MP3/BT/AUZ/CO AXIAL/OPTICAL/INPUTS  
Multi interface  
Output Power (RMS): 150W+150W

Function:  
USB/MIC/AUX/BT  
Remote Control  
Recording Function  
2 Pcs Microphone

8" High bass  
Wooden enclosure  
High frequency  
Driver Unit Size Woofer 21.0CMS Tweeter 3.4CMS  
Output Power(RMS) 150W  
Program Power(RMS) 300W

## COMBO2 : COVR-AMP-152 JM- COVR-SPK-10 KARAOKE AMPLIFIER WITH SPEAKERS

2x high class microphone  
Digital amplifier  
ECHO/PRESET/MIC FUNCTIONS  
300 WATT  
USB/MP3/BT/AUZ/CO AXIAL/OPTICAL/INPUTS  
Multi interface  
Output Power (RMS):150W+150W

Function:  
USB/MIC/AUX/BT  
Remote Control  
Recording Function  
2 Pcs Microphone

150 WX2=300 W  
10" Sub woofer  
Wooden casing  
Driver Unit Size Woofer 25.3CMS Tweeter 9.8CMS  
Output Power(RMS) 150W  
Program Power(RMS) 300W



[Back to Contents](#)





## JM WS-65AM(B) ACTIVE WALL SPEAKER



Active 120 W  
ADD 3 MORE SPEAKERS  
USB/SD/FM  
REMOTE CONTROL  
6.5" WOOFER  
MICROPHONE /AUX INPUT

Max Power:	80W
Rated Power:	2x40W
Voltage:	AC210-240V 50Hz
Sensitivity:	88dB
Frequency response(-10dB):	70-20kHz
Coverage angle(1kHz/-6dB):	150°
Dimension(W*H*D):	284X242X190mm
Weight:	3.5KG
Color:	Black

## JM WS-65AM(W) ACTIVE WALL SPEAKER

Active 120 W  
ADD 3 MORE SPEAKERS  
USB/SD/FM  
REMOTE CONTROL  
6.5" WOOFER  
MICROPHONE /AUX INPUT

Max Power:	80W
Rated Power:	2x40W
Voltage:	AC210-240V 50Hz
Sensitivity:	88dB
Frequency response(-10dB):	70-20kHz
Coverage angle(1kHz/-6dB):	150°
Dimension(W*H*D):	284X242X190mm
Weight:	3.5KG
Color:	White



[Back to Contents](#)



# JM WS-65B

## PASSIVE WALL SPEAKER



6.5" WOOFER	
40 W	
METAL HANGING BRACKET	
100% COPPER TRANSFORMER	
Max Power:	80W
Rated Power:	40W
Power Taps:	40W/20W/10W/5W/8Ω /100V/70V
Sensitivity:	90dB
Frequency response(-10dB):	70-20kHz
Coverage angle(1kHz/-6dB):	150°
IMP:	125Ω /250Ω /500KΩ /1KΩ /2KΩ /8Ω
Dimension(W*H*D):	201X285X152mm
Weight:	3.5KG
Color:	Black

Variable power Setting for multi zone connections

# JM WS-65W

## PASSIVE WALL SPEAKER

6.5" WOOFER	
40 W	
METAL HANGING BRACKET	
100% COPPER TRANSFORMER	
Max Power:	80W
Rated Power:	40W
Power Taps:	40W/20W/10W/5W/8Ω /100V/70V
Sensitivity:	90dB
Frequency response(-10dB):	70-20kHz
Coverage angle(1kHz/-6dB):	150°
IMP:	125Ω /250Ω /500KΩ /1KΩ /2KΩ /8Ω
Dimension(W*H*D):	201X285X152mm
Weight:	3.5KG
Color:	White



Variable power Setting for multi zone connections

[Back to Contents](#)

## JM WS-53B

### PASSIVE WALL SPEAKER



#### 5.25" WOOFER

30 W

METAL HANGING BRACKET

100% COPPER TRANSFORMER

Max Power:	60W
Rated Power:	30W
Power Taps:	30W/15W/7.5W/3.8W/8Ω /100V/70V
Sensitivity:	89dB
Frequency response(-10dB):	80-20kHz
Coverage angle(1kHz/-6dB):	130°
IMP:	167Ω /333Ω /667KΩ /1.33KΩ /2.67KΩ /8Ω
Dimension(W*H*D):	175X255X145mm
Weight:	2.7KG
Color:	Black

Variable power Setting for multi zone connections

## JM WS-53W

### PASSIVE WALL SPEAKER

#### 5.25" WOOFER

30 W

METAL HANGING BRACKET

100% COPPER TRANSFORMER

Max Power:	60W
Rated Power:	30W
Power Taps:	30W/15W/7.5W/3.8W/8Ω /100V/70V
Sensitivity:	89dB
Frequency response(-10dB):	80-20kHz
Coverage angle(1kHz/-6dB):	130°
IMP:	167Ω /333Ω /667KΩ /1.33KΩ /2.67KΩ /8Ω
Dimension(W*H*D):	175X255X145mm
Weight:	2.7KG
Color:	White



Variable power Setting for multi zone connections

[Back to Contents](#)

JM WS-44B  
PASSIVE WALL SPEAKER



4" WOOFER	
20 W	
METAL HANGING BRACKET	
100% COPPER TRANSFORMER	
Max Power:	40W
Rated Power:	20W
Power Taps:	20W/10W/5W/2.5W/8Ω /100V/70V
Sensitivity:	89dB
Frequency response(-10dB):	90-20kHz
Coverage angle(1kHz/-6dB):	130°
IMP:	250Ω /500Ω /1KΩ /2KΩ /4KΩ /8Ω
Dimension(W*H*D):	152X217X119mm
Weight:	2.4KG
Color:	Black

Variable power Setting for multi zone connections

JM WS-44W  
PASSIVE WALL SPEAKER

4" WOOFER	
20 W	
METAL HANGING BRACKET	
100% COPPER TRANSFORMER	
Max Power:	40W
Rated Power:	20W
Power Taps:	20W/10W/5W/2.5W/8Ω /100V/70V
Sensitivity:	89dB
Frequency response(-10dB):	90-20kHz
Coverage angle(1kHz/-6dB):	130°
IMP:	250Ω /500Ω /1KΩ /2KΩ /4KΩ /8Ω
Dimension(W*H*D):	152X217X119mm
Weight:	2.4KG
Color:	White



Variable power Setting for multi zone connections

[Back to Contents](#)





## JM CS-FL650

### FRAMELESS CEILING SPEAKER

#### 70 WATT

<b>Driver:</b>	Woofer 6.5" + Tweeter 0.5"
<b>Frequency response:</b>	50 - 20,000 Hz
<b>Sensitivity (1m, 1W):</b>	89 dB
<b>Speaker dimension:</b>	232 x 92 mm (φxH)
<b>Material:</b>	Engineering-Plastics
<b>Impedance:</b>	8Ω
<b>Transformer(T):</b>	20w - 15w - 8Ω (100V or 70V)
<b>Cone:</b>	Carbon Fibre

Frameless slimline ceiling speakers. The twist-fit grille enables quick and neat installation resulting in a premium quality sound delivery system. This high-grade ceiling speaker featuring a woofer for extended low frequency response, and a tweeter unit for accurate FH reproduction. A flared wave-guide baffle helps to aid dispersion for wider coverage.

## JM CS-FL530

### FRAMELESS CEILING SPEAKER

#### 50 WATT

<b>Driver:</b>	Woofer 5.25" + Tweeter 0.5"
<b>Frequency response:</b>	60 - 20,000 Hz
<b>Sensitivity (1m, 1W):</b>	88 dB
<b>Speaker dimension:</b>	204 x 84 mm (φxH)
<b>Material:</b>	Engineering-Plastics
<b>Impedance:</b>	8Ω
<b>Transformer(T):</b>	15w - 10w - 8Ω (100V or 70V)
<b>Cone:</b>	Carbon Fibre

Frameless slimline ceiling speakers. The twist-fit grille enables quick and neat installation resulting in a premium quality sound delivery system. This high-grade ceiling speaker featuring a woofer for extended low frequency response, and a tweeter unit for accurate FH reproduction. A flared wave-guide baffle helps to aid dispersion for wider coverage.



[Back to Contents](#)

# JM CS-650W

## FRAME CEILING SPEAKER



### 70 WATT

Driver:	Woofer 6.5" swivel tweeter 0.5"
Frequency response:	45 - 20,000 Hz
Sensitivity (1m, 1W):	89 dB
Speaker dimension:	228 ×85 mm (φxH)
Material:	Engineering-Plastics
Impedance:	8Ω
Transformer(T):	20w - 15w - 8Ω (100V or 70V)

These ceiling speakers are the most cost effective 2ways speaker design giving excelent audio quality. Combining a coaxial woofer with dome tweeter they are available for domestic and commercial applications.The flush mount design and fold out retaining clamps alow them to be easily installed in new or existing ceilings.

# JM CS-521W

## FRAME CEILING SPEAKER

### 50 WATT

Driver:	Woofer 5.25"swivel tweeter 0.5"
Frequency response:	55 - 20,000 Hz
Sensitivity (1m, 1W):	88 dB
Speaker dimension:	198×70mm (φxH)
Material:	Engineering-Plastics
Impedance:	80Ω
Transformer(T):	15w - 10w - 8Ω (100V or 70V)

These ceiling speakers are the most cost effective 2ways speaker design giving excelent audio quality. Combining a coaxial woofer with dome tweeter they are available for domestic and commercial applications.The flush mount design and fold out retaining clamps alow them to be easily installed in new or existing ceilings.



[Back to Contents](#)









## JM CAB-SC470 SPEAKER CABLE

100m/Roll of High Quality, flexible double isolated loudspeaker OFC cable AWG10 – All REACH material of Environmental Protection standards. Plastic-roll packaging.

Core Structure: 2x4.5mm<sup>2</sup>

## JM CAB-SC260 SPEAKER CABLE

100m/Roll of High Quality, flexible double isolated loudspeaker OFC cable AWG13 – All REACH material of Environmental Protection standards. Plastic-roll packaging.

Core Structure: 2x2.5mm<sup>2</sup>



## JM CAB-SC152 SPEAKER CABLE

100m/Roll of High Quality, flexible double isolated loudspeaker OFC cable AWG15 – All REACH material of Environmental Protection standards. Plastic-roll packaging.

Core Structure: 2x1.5mm<sup>2</sup>



[Back to Contents](#)

## JM CAB-MC150

### MICROPHONE CABLE

100m/Roll of Balance Cable with low capacitive values and double OFC tin plated braid shield, highly flexible cable. Loss-free transmission even over long distances. All OFC REACH materials of Environmental Protection standards. Plastic-roll packaging.

Core Structure: 2x1.5mm<sup>2</sup>



## JM CAB-SN08

### SNAKE CABLE

OFC copper conductor and density shield, highest level audio video multi bulk cable. First-in-class zinc material. First-in-class nylon material. NEW XLR connector. All REACH material of Environmental Protection standards.

## JM CAB-SN02

### SNAKE CABLE

OFC copper conductor and density shield, highest level audio-video multi-bulk cable, with 24k real Gold-plated tip. First-in-class Zinc material. First-in-class Nylon material connector. All REACH material of Environmental Protection standards.



[Back to Contents](#)



## JM CAB-002 COMPONENT CABLE

OFC copper conductor and braid shield, cables with double protector transparent high level PVC jacket with flexible conductive PVC. First-in-class Nylon material. All NEW XLR, 24k real Gold-plated tube and tip connector. All REACH material of Environmental Protection standards.

## JM CAB-008 COMPONENT CABLE

OFC copper conductor and braid shield. Cables with double protector transparent high level PVC jacket and flexible conductive PVC. First-in-class Nylon material. All NEW XLR, 24k Gold-plated tube and tip connector. All REACH material of Environmental Protection standards.



## JM CAB-011 COMPONENT CABLE

OFC copper conductor and braid shield. Cables with double protector transparent high level PVC jacket and flexible conductive PVC. First-in-class Nylon material. All NEW XLR, 24k Gold-plated tube and tip connector. All REACH material of Environmental Protection standards.



[Back to Contents](#)



## JM CAB-017

### COMPONENT CABLE

OFC copper conductor and braid shield. Cables with double protector transparent high level PVC jacket and flexible conductive PVC. First-in-class Nylon material. All NEW XLR, 24k Gold-plated tube and tip connector. All REACH material of Environmental Protection standards.



## JM CAB-020

### COMPONENT CABLE

Balance cable with low capacitive values and double OFC, tin-plated braid shield, highly flexible cable, loss-free transmission even over long distances. 24k Gold-plated tube and tip. 3.5 stereo connector. All REACH material of Environmental Protection standards.



## JM CAB-026

### COMPONENT CABLE

Balance cable with low capacitive values and double OFC, tin-plated braid shield, highly flexible cable, loss-free transmission even over long distances. 24k Gold-plated tube and tip. 3.5 stereo connector. All REACH material of Environmental Protection standards.



[Back to Contents](#)



## JM CAB-029 COMPONENT CABLE

Balance cable with low capacitive values and double OFC, tin-plated braid shield, highly flexible cable, loss-free transmission even over long distances. 24k Gold-plated tube and tip. 3.5 stereo connector. All REACH material of Environmental Protection standards.

## JM CAB-035 COMPONENT CABLE

Balance cable with low capacitive values and double OFC, tin-plated braid shield, highly flexible cable, loss-free transmission even over long distances. 24k Gold-plated tube and tip. 3.5 stereo connector. All REACH material of Environmental Protection standards.



## JM CAB-038 COMPONENT CABLE

High Quality, flexible double isolated loudspeaker OFC cable AWG15, copper pins. First-in-class Nylon material PA6 speaker plug. All REACH material of environmental protection standards.



[Back to Contents](#)

## JM CON-SPK-026

### SPEAKON CONNECTOR

Copper pins, first nylon material PA6 nickel plated



## JM CON-SPK-020

### SPEAKON CONNECTOR

Zinc pins, first nylon material PA6 nickel plated



## JM CON-XLRM

### XLR CONNECTOR

First zinc material, copper tip and tube, first nylon material, PA66 nickel and tin plated



[Back to Contents](#)





## JM CON-XLRF

### XLR CONNECTOR

First zinc material, copper tip and tube, first nylon material, PA66 nickel and tin plated

## JM CON-P38A

### AUDIO CONNECTOR

First zinc material, copper tip and tube, first nylon material, 24k gold plated nickel and 24k gold real plated



## JM CON-P38B

### AUDIO CONNECTOR

First zinc material, copper tip and tube, first nylon material, 24k gold plated nickel and 24k gold real plated



## JM CON-P38C

### AUDIO CONNECTOR

First zinc material, copper tip and tube, first nylon material, 24k gold plated nickel and 24k gold real plated



[Back to Contents](#)

# **SOUND PROFOUND BRAND**

[Back to Contents](#)





Scan QR Code  
to visit our website

**SOUND  
PROFOUND  
BRAND**

Customer Care Toll Free: 8100-028-028  
WhatsApp (Sales enquiry) - 81001 32800